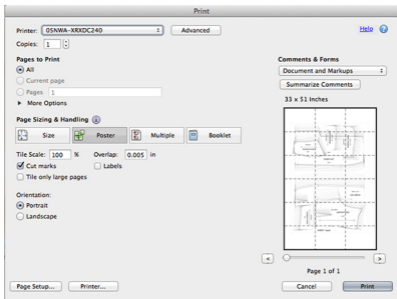


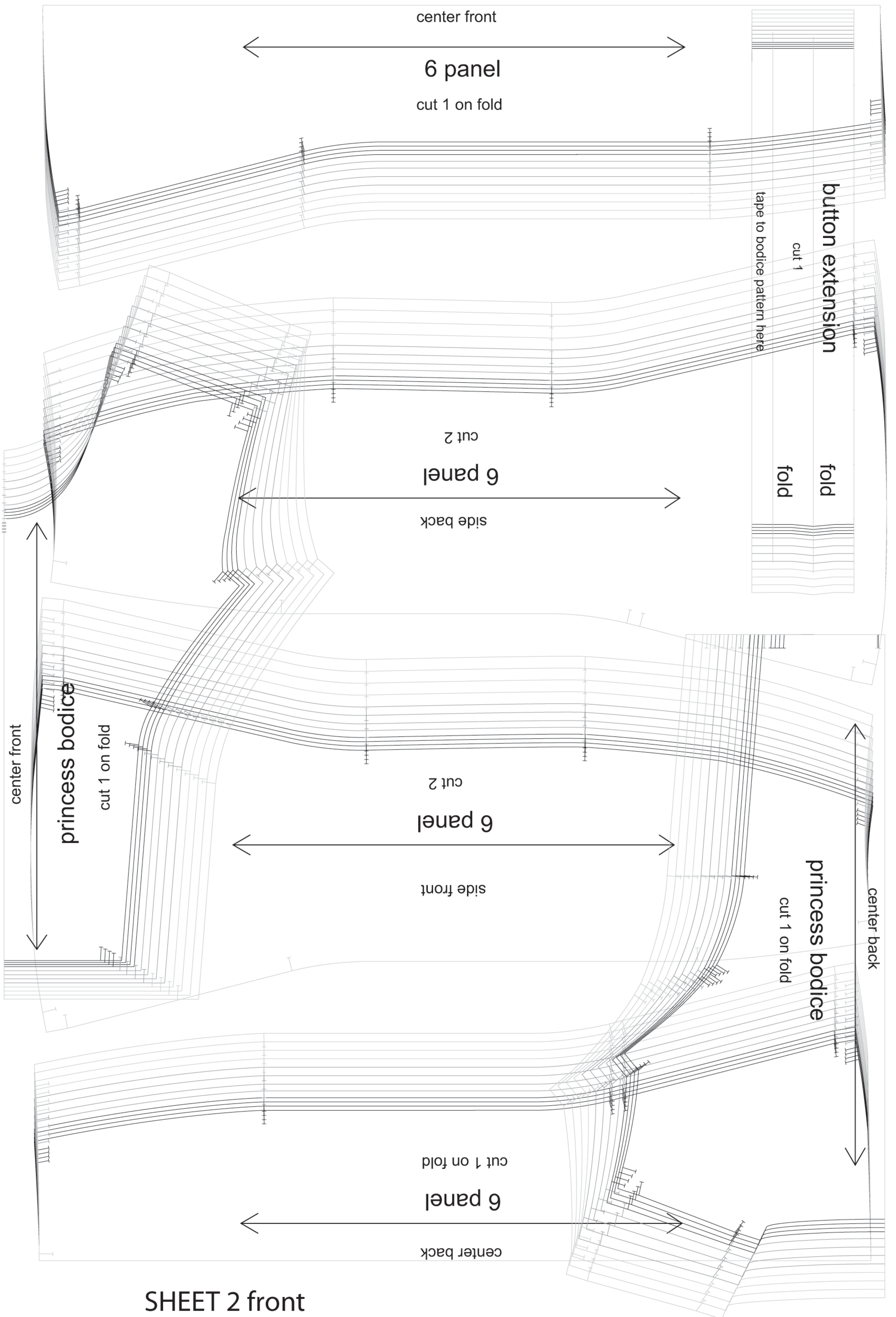
HOW TO PRINT THE PATTEENS FOR THIS EBOOK

The patterns for this book are 28" × 40" (2016 × 2880 pixels). If you have access to a large-format printer, you can print at 100%. However, you can easily print from a standard-sized printer and assemble the patterns for home use by using the Poster function in your Reader print menu. This will divide your pattern onto multiple sheets of paper that are easily pieced together to create a complete pattern.

First, make sure you have a full version of Adobe PDF Reader, not a preview version. It's a free download from <http://get.adobe.com/reader/>.

- Choose File > Print or click on the Print icon in the Toolbar.
- Under Pages to Print, select All to print the entire pattern.
- Under Page Sizing and Handling, choose Actual Size.
- Select Poster. For Tile Scale, select 100% to print the full-sized pattern. (Note that the previewer will show you how the document will print.)
- Overlap: This specifies the amount of duplicated information you want printed on each page for assembly. If you plan to tape the pages together, you can use the default setting. If you plan to glue the pages together, you may need more space for the application of the glue.
- Select Cut Marks to add marks on the corner of each page as guides for cutting and assembling, based on the overlap properties you set.





center front

6 panel

cut 1 on fold

button extension

cut 1

tape to bodice pattern here

fold

fold

cut 2

6 panel

side back

cut 2

6 panel

side front

center front

princess bodice

cut 1 on fold

princess bodice

cut 1 on fold

center back

cut 1 on fold

6 panel

center back

SHEET 2 front