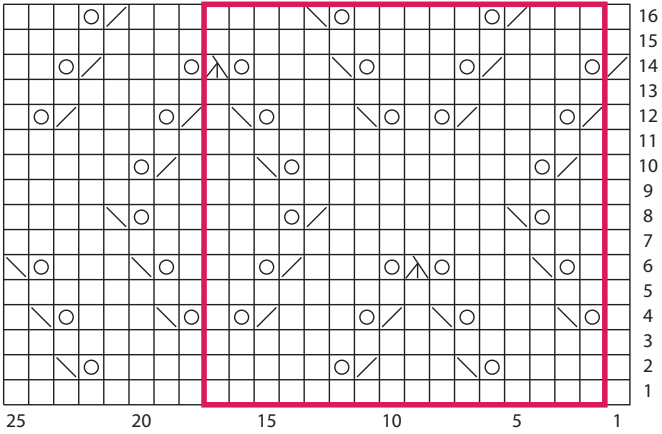


# Diamond Lace Pattern



## Key

□ RS: Knit  
WS: Purl

○ yo

▤ ssk

▥ k2tog

▴ sk2p

▭ indicates pattern stitch repeat

**NOTE:** Do not work centered double decreases as the first or last stitch of a row; instead, work a k2tog or ssk. Always be sure that you work one yarn over for each stitch decreased.

