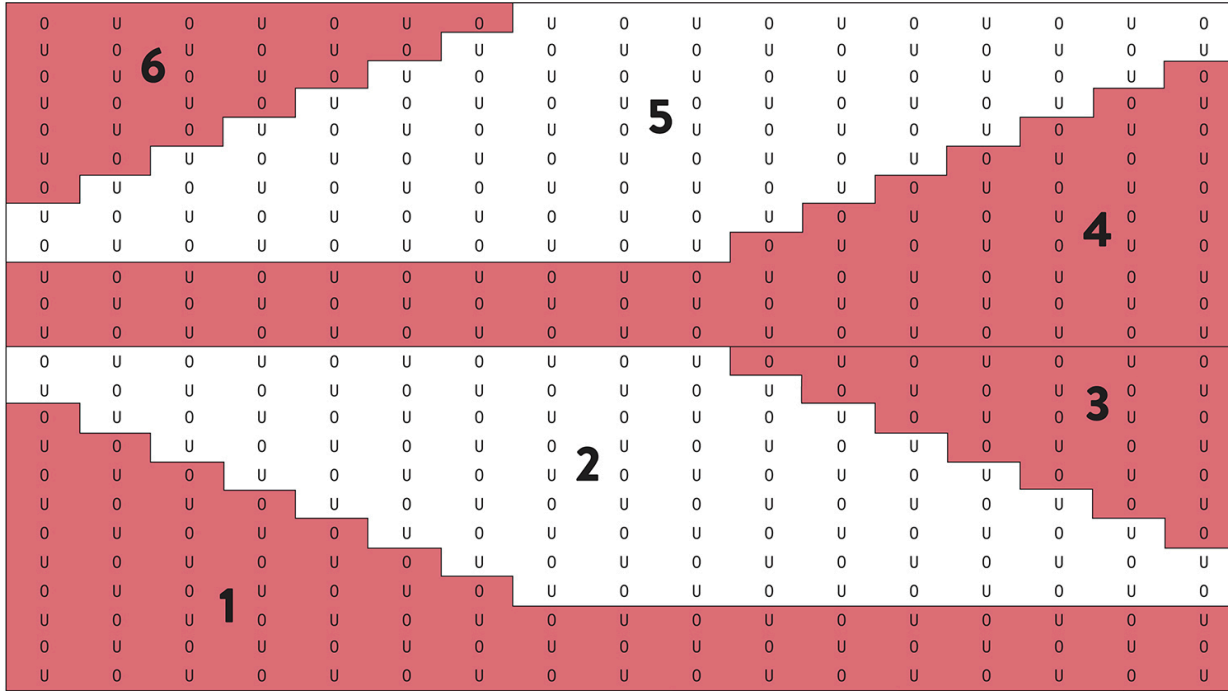


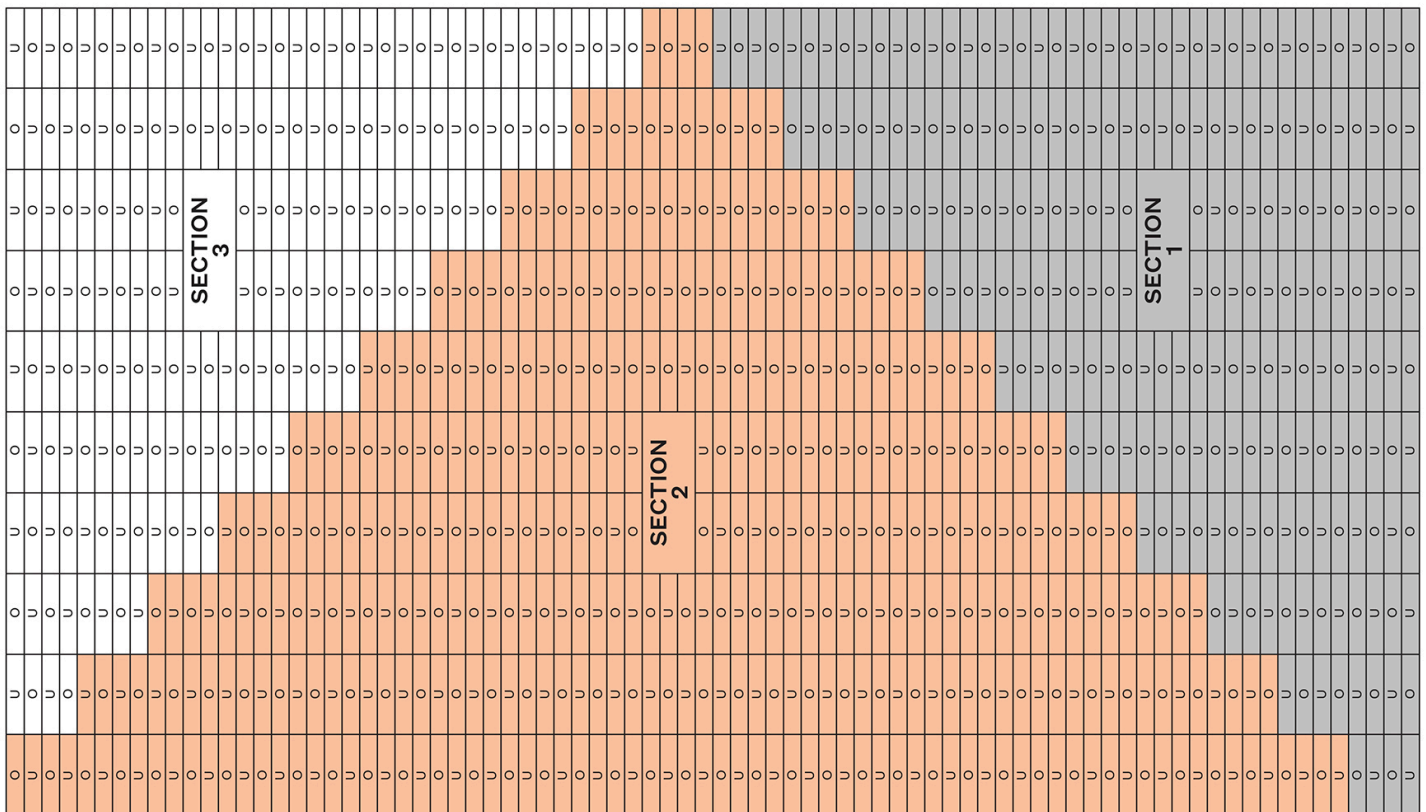
WEAVING CHARTS

PATTERNED BRACELET CHART



BOTTOM OF LOOM

TRIANGLE TANK TOP PATTERN

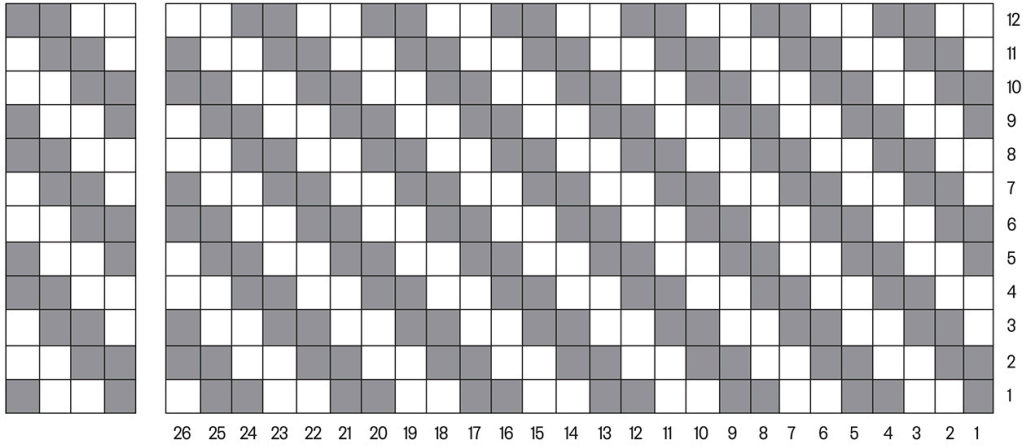


BOTTOM OF LOOM

GRAY = OVER
WHITE = UNDER

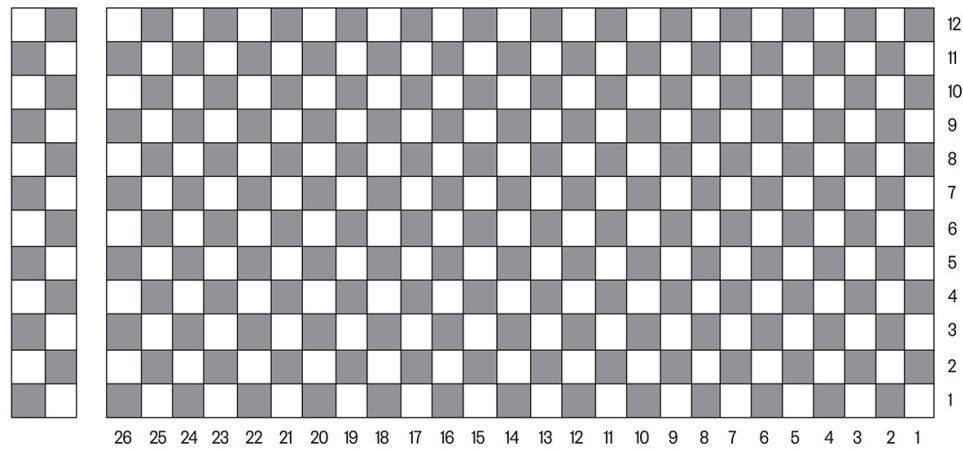
TWILL WEAVE

If altering pattern, you must include multiples of 2 warp threads for selvedge to work out in over under pattern.



Repeat over 4 warp threads.

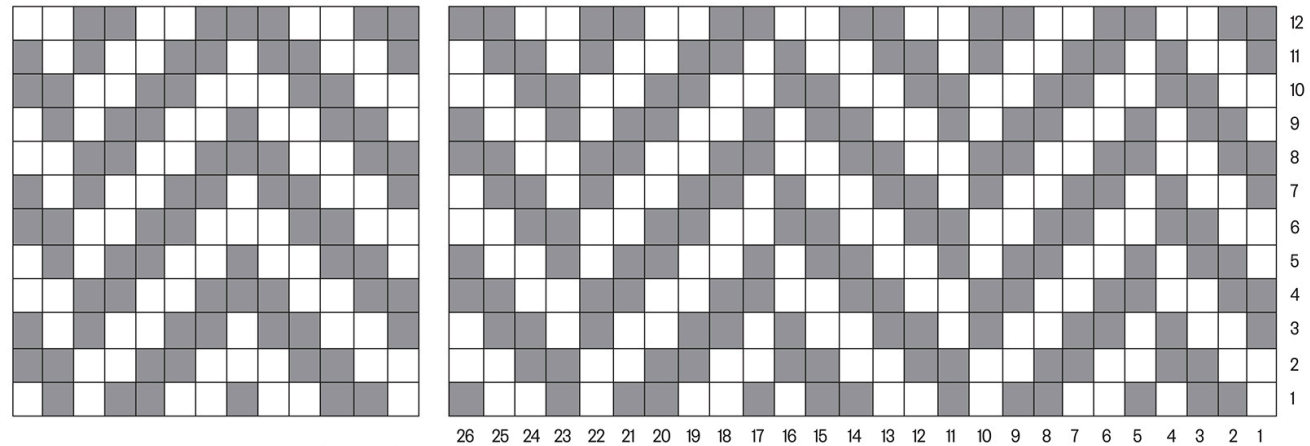
PLAIN WEAVE



Repeat over 2 warp threads.

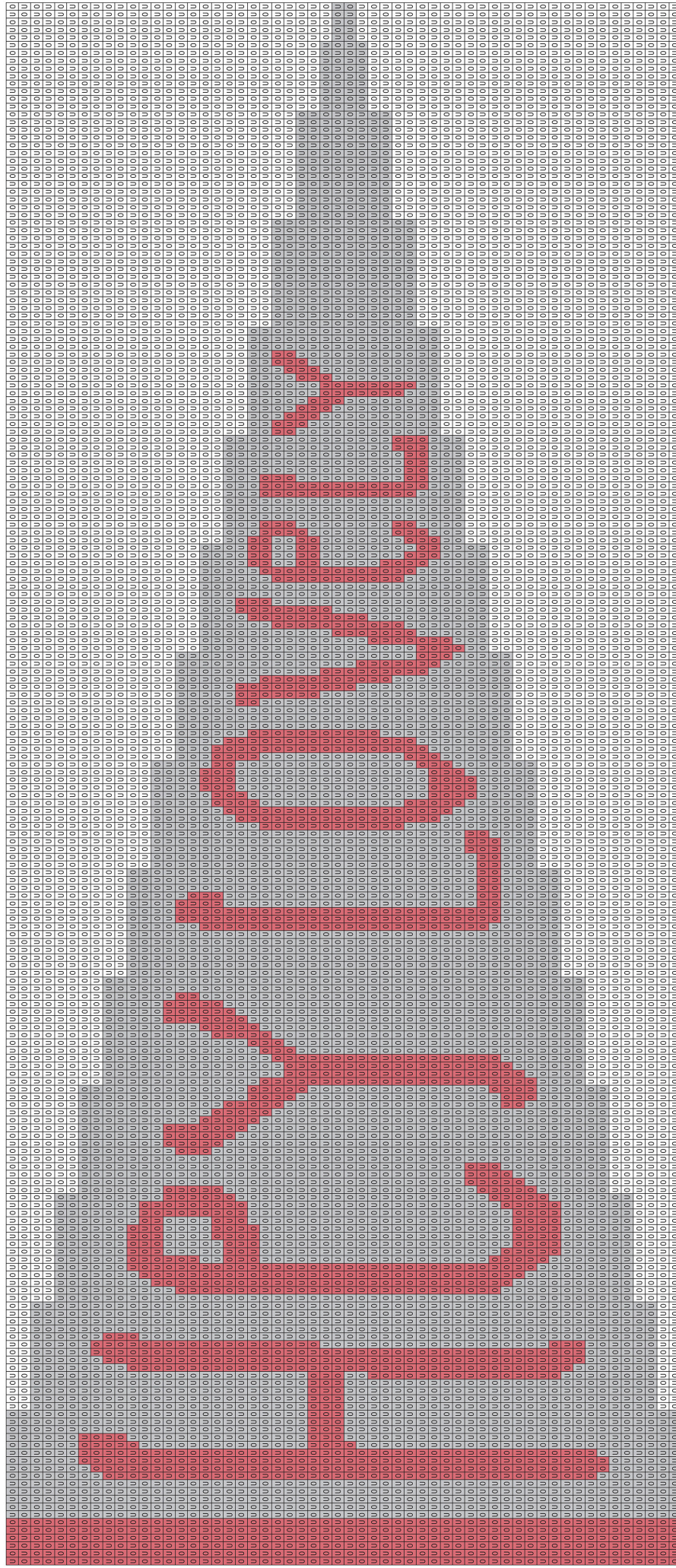
HERRINGBONE WEAVE CHART

If altering the pattern, you must stop pattern on warp thread 2, 4, 5, 7, 9, or 12 of repeat for selvedge work out in over-under pattern.



Repeat over 12 warp threads.

“HEY LOVELY” PENNANT CHART



BOTTOM OF LOOM