

rice stitch

(multiple of 2 stitches plus 1 stitch)



(WS) 2

•	•	•
•	•	•

 1 (RS)

hurdle pattern

(multiple of 2 stitches plus 1 stitch)



(WS) 2

•	•	•	•
•	•	•	•
•	•	•	•

 3
1 (RS)

garter rib

(multiple of 2 stitches plus 1 stitch)



(WS) 2

•	•	•
•	•	•

 1 (RS)

double garter rib



(multiple of 4 stitches plus 2 stitches)

(WS) 2

 1 (RS)

dashes



(multiple of 6 stitches plus 3 stitches)

4

 3
(WS) 2

 1 (RS)

thermal stitch



(multiple of 4 stitches plus 2 stitches)

4

 3
(WS) 2

 1 (RS)

textured rib

(multiple of 4 stitches plus 1 stitch)



(WS) 2

	•		•
	•		•

 1 (RS)

horizontal welts

(any number of stitches)



6

•
•
•
•

 5
4

•
•

 3
(WS) 2

•

 1 (RS)

stacked bricks

(multiple of 7 stitches plus 2 stitches)



6

		•	•	•	•		
		•	•	•	•		

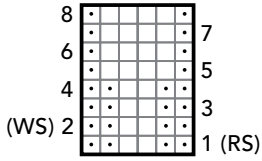
 5
4

 3
(WS) 2

 1 (RS)

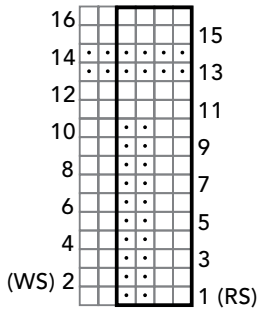
reversible columns rib

(multiple of 6 stitches)



ribs and bands

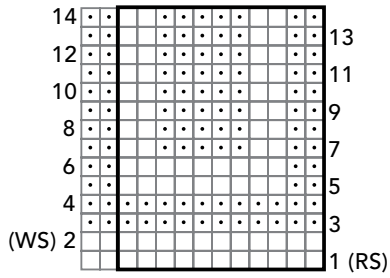
(multiple of 4 stitches plus 2 stitches)



boxes



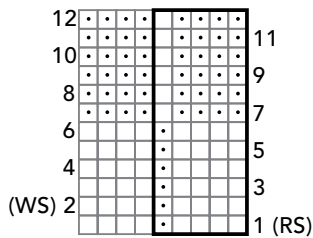
(multiple of 11 stitches plus 2 stitches)



picket fences



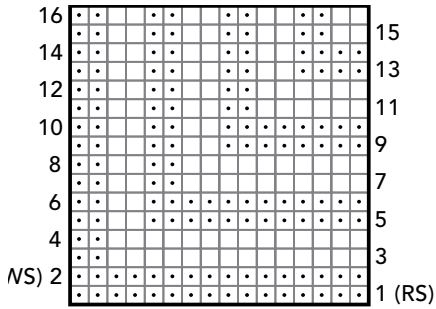
(multiple of 5 stitches plus 4 stitches)



ribbed squares



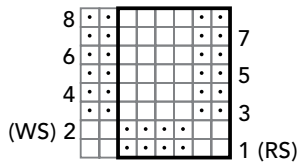
(multiple of 16 stitches)



embossed blocks



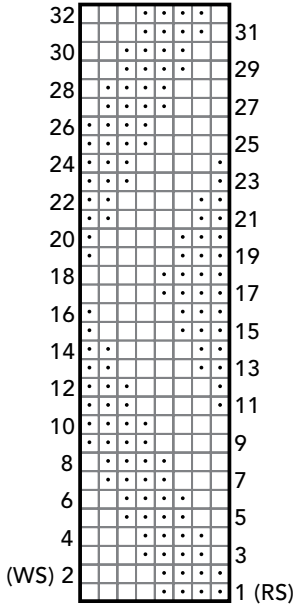
(multiple of 6 stitches plus 2 stitches)



vertical zigs and zags



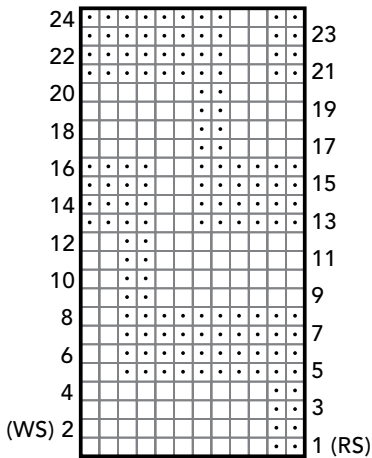
(multiple of 8 stitches)



stairsteps



(multiple of 12 stitches)

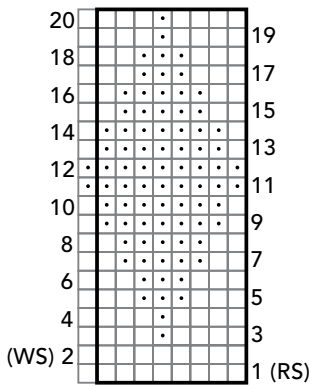


harlequin

(multiple of 8 stitches plus 1 stitch)



easy

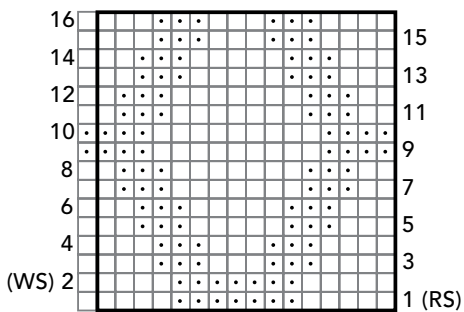


brocade

(multiple of 16 stitches plus 1 stitch)



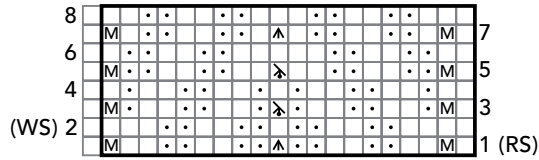
easy



ribbed chevrons



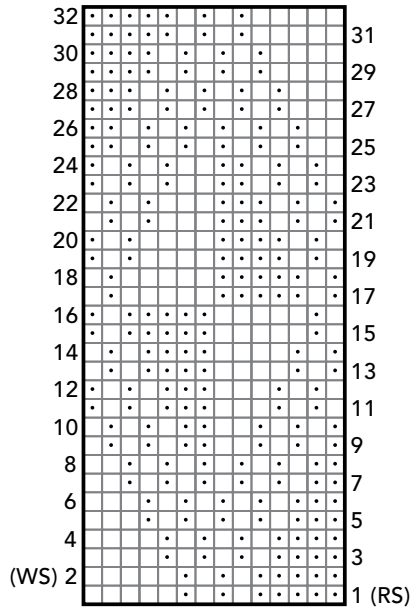
(multiple of 20 stitches plus 1 stitch)



moss stitch diamonds



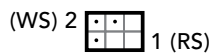
(multiple of 14 stitches)



farrow rib



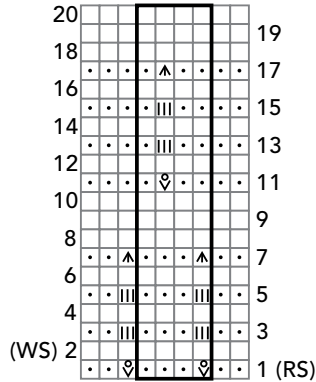
(multiple of 3 stitches)



almond clusters

easy

(multiple of 4 stitches plus 5 stitches,
increases to multiple of 6 stitches
plus 7 stitches)



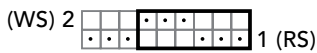
NOTE

- Stitch count varies from row to row.

subtle stripes



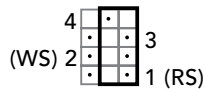
(multiple of 6 stitches plus 3 stitches)



nubby pattern

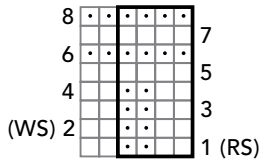


(multiple of 2 stitches plus 1 stitch)



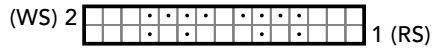
emerald-cut ribs

(multiple of 4 stitches plus 2 stitches)



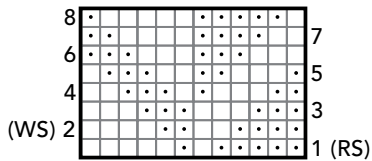
textured stripes

(multiple of 15 stitches)



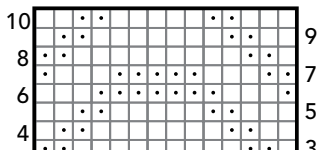
mock cables

(multiple of 12 stitches)



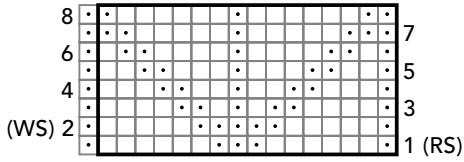
sand ripples

(multiple of 14 stitches)



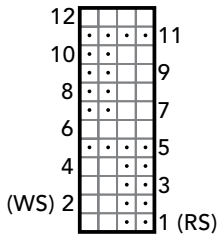
gansey chevrons

(multiple of 16 stitches plus 1 stitch)



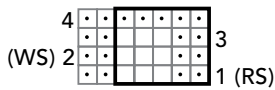
fences

(multiple of 4 stitches)



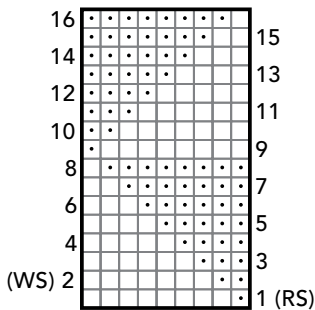
textured check

(multiple of 5 stitches plus 2 stitches)



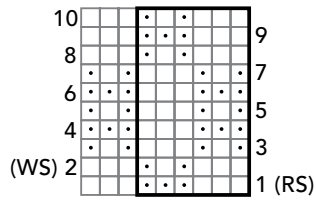
flags

(multiple of 9 stitches)



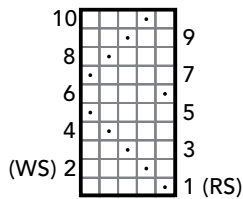
framed ovals

(multiple of 6 stitches plus 3 stitches)



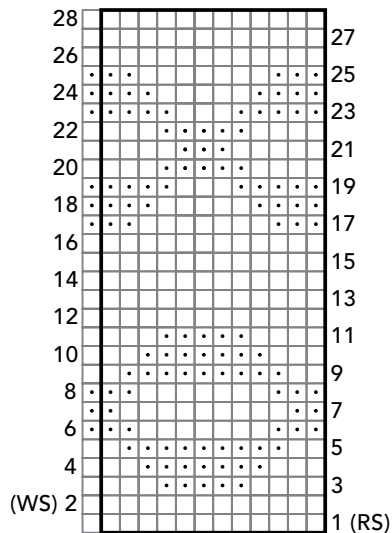
lightning

(multiple of 5 stitches)



textured chains

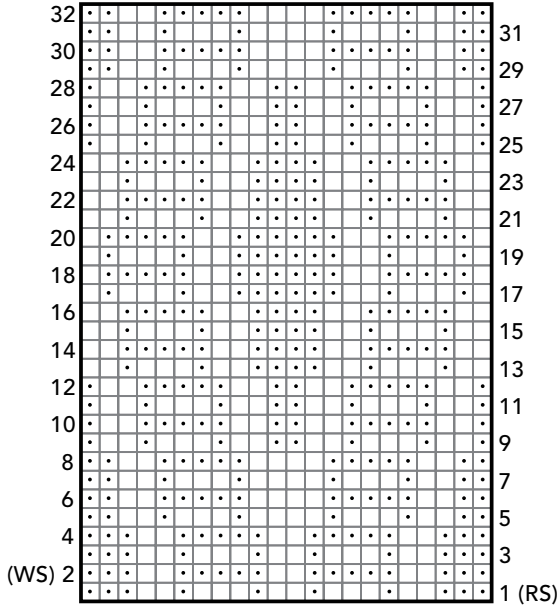
(multiple of 12 stitches plus 1 stitch)



diamonds and ridges



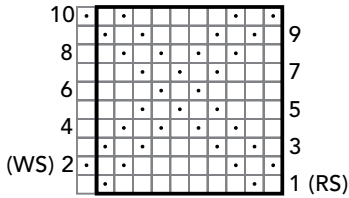
(multiple of 22 stitches)



seed stitch trellis



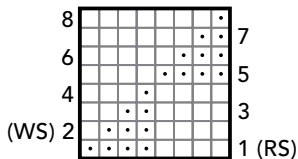
(multiple of 10 stitches plus 1 stitch)



triangles in relief

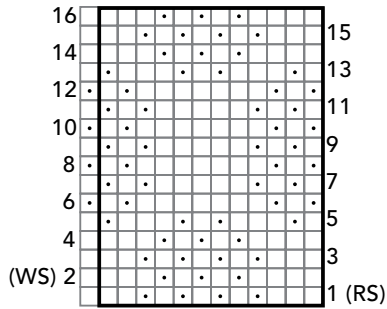


(multiple of 8 stitches)



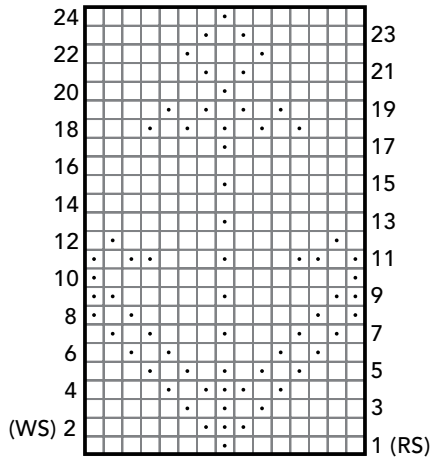
circles and squares

(multiple of 12 stitches plus 1 stitch)



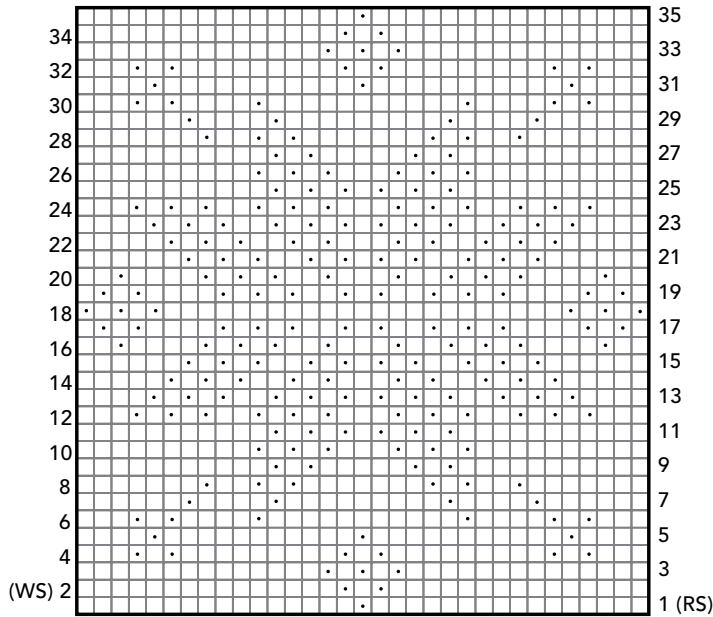
anchor

(over 15 stitches on stockinette background)



snowflake

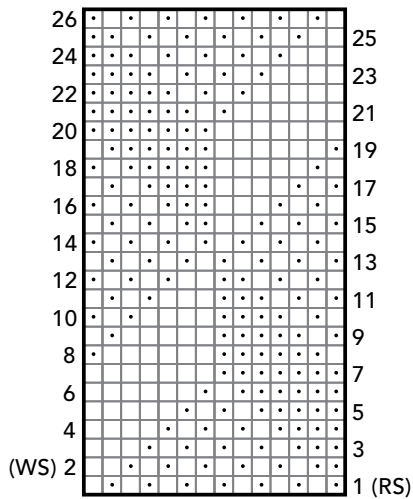
(over 33 stitches on stockinette background)



tumbling blocks

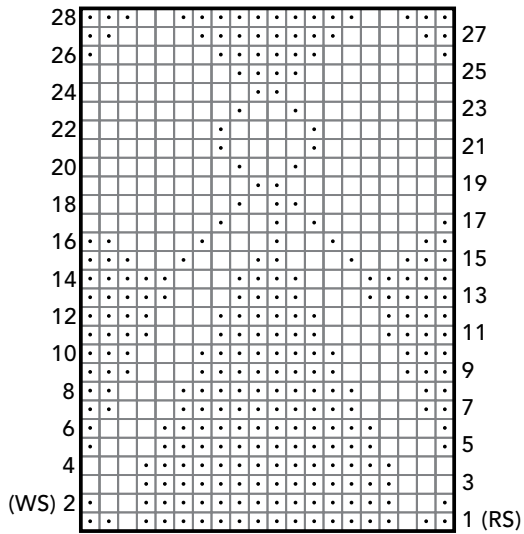


(multiple of 14 stitches)



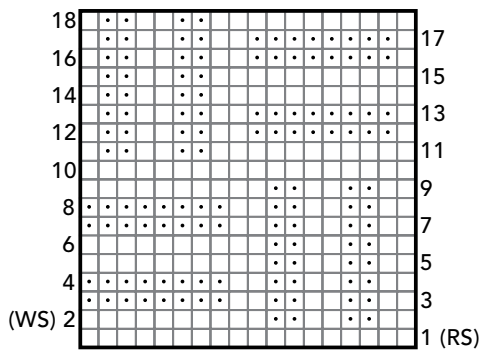
pretty bow

(over 20 stitches on a reverse stockinette background)



basket stitch

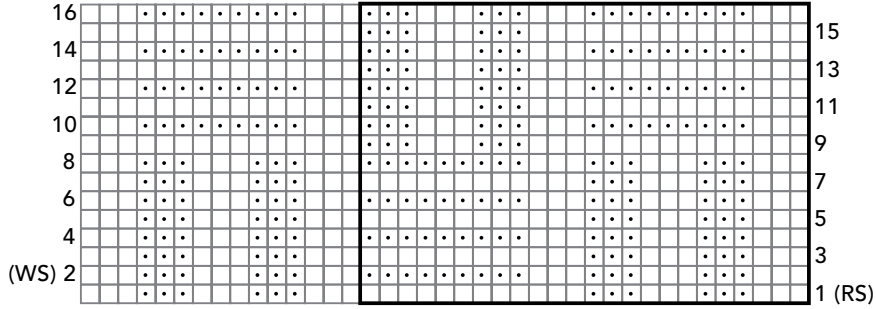
(multiple of 18 stitches)



undulating ribs

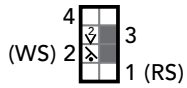


(multiple of 24 stitches plus 15 stitches)



jute stitch

(multiple of 2 stitches)

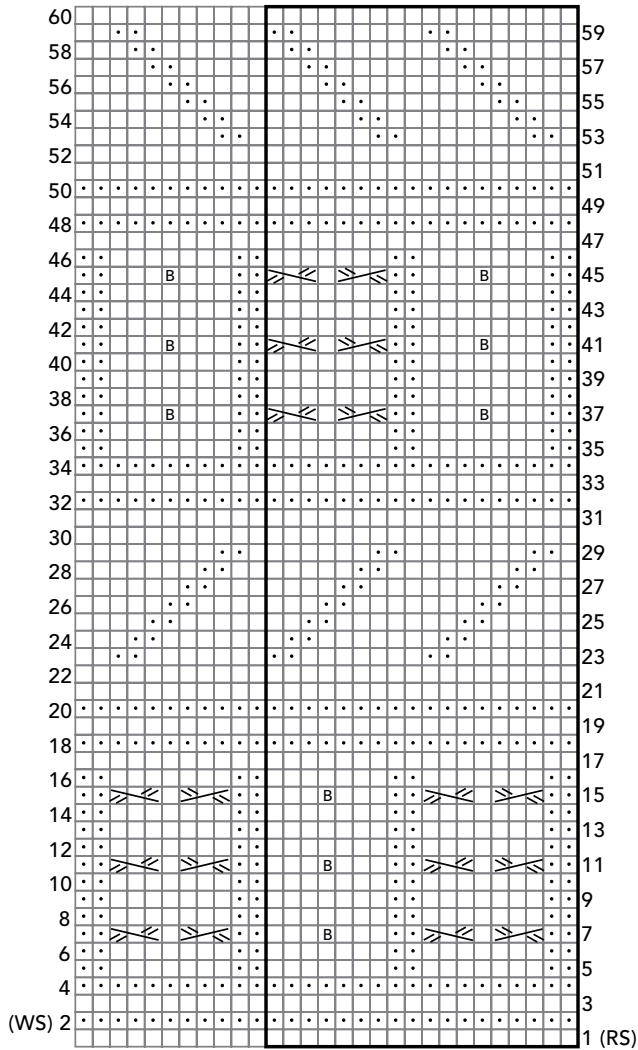


NOTE

- Stitch count varies from row to row.

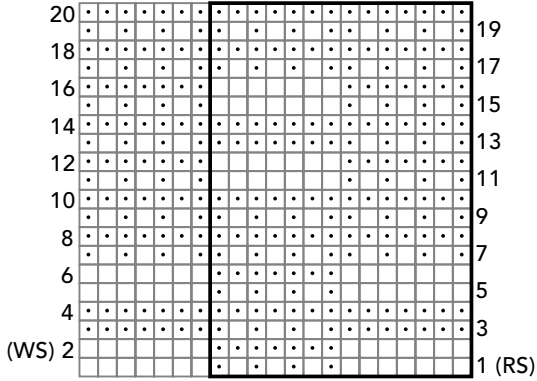
textured sampler

(multiple of 18 stitches plus 11 stitches)



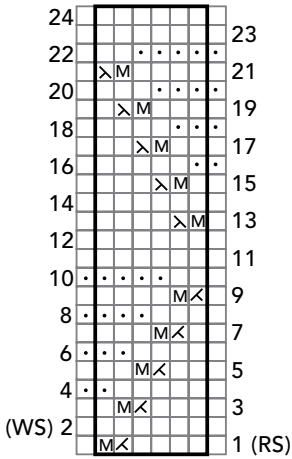
roman columns

(multiple of 14 stitches plus 7 stitches)



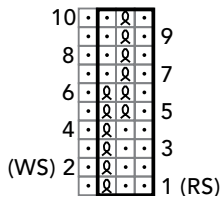
oscillating texture

(multiple of 6 stitches plus 2 stitches)



slate

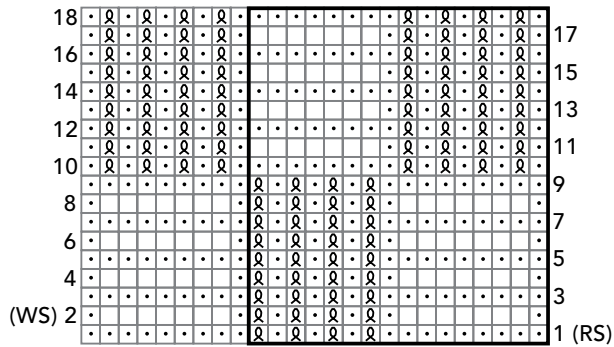
(multiple of 3 stitches plus 1 stitch)



woven blocks



(multiple of 16 stitches plus 9 stitches)



guernsey bands

(multiple of 6 stitches plus 1 stitch)

