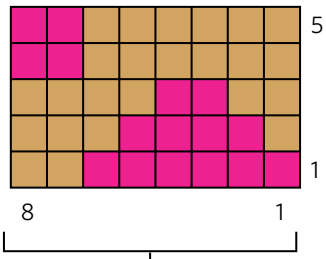


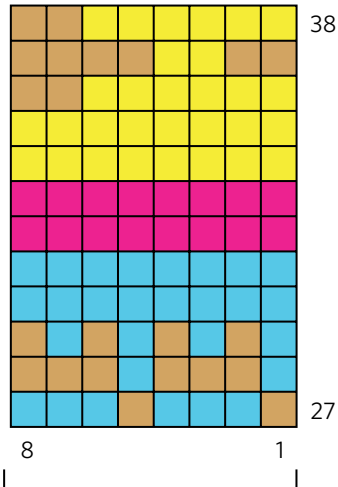
Tree-o

Tree-o 1



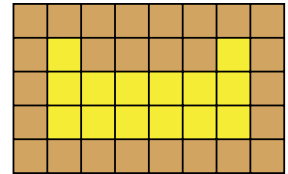
Work every
8 stitches in the round

Tree-o 2

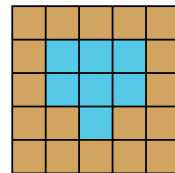


Work every
8 stitches in the round

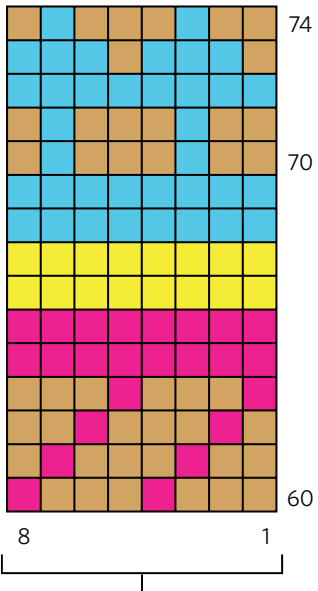
Duplicate Stitch Pattern for Bottom Face



Duplicate Stitch Pattern for Middle Face

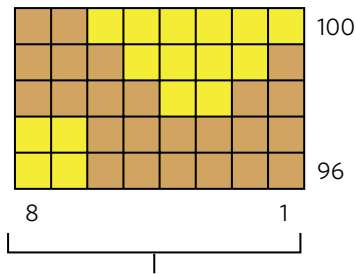


Tree-o 3



Work every
8 stitches in the round

Tree-o 4



Work every
8 stitches in the round

Knit with A
 Knit with B
 Knit with C
 Knit with D