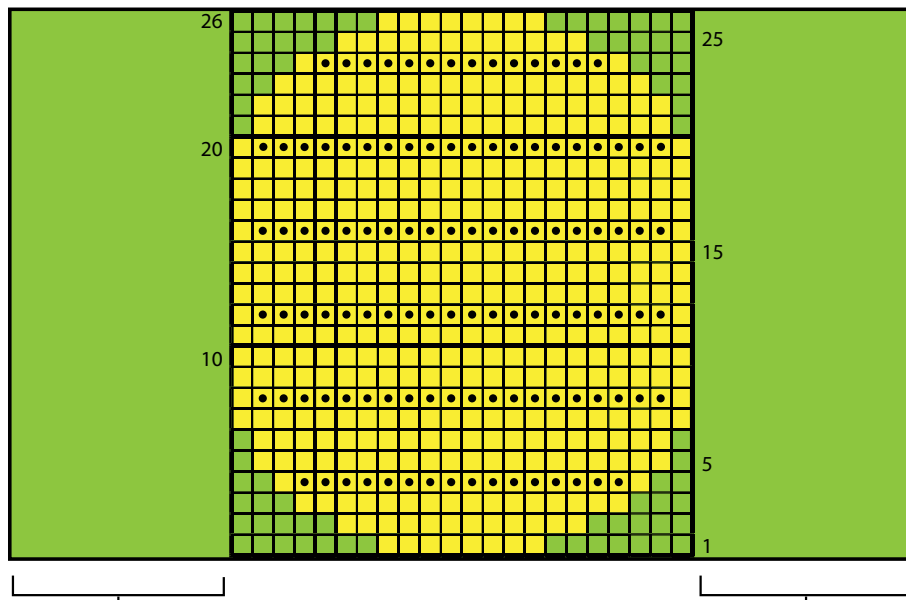


Roary

Belly



Knit stitches 60-96 on odd-numbered rows
Purl stitches 1-37 on even-numbered rows

Knit stitches 1-37 on odd-numbered rows
Purl stitches 60-96 on even-numbered rows

- Knit with A on odd-numbered rows, purl with A on even-numbered rows
Note: Work with original skein of A for the stitches on the right half of the chart, and with Skein 2 of A for the stitches on the left half of the chart.
- Knit with B on odd-numbered rows, purl with B on even-numbered rows
- Knit with B (always on even-numbered rows)