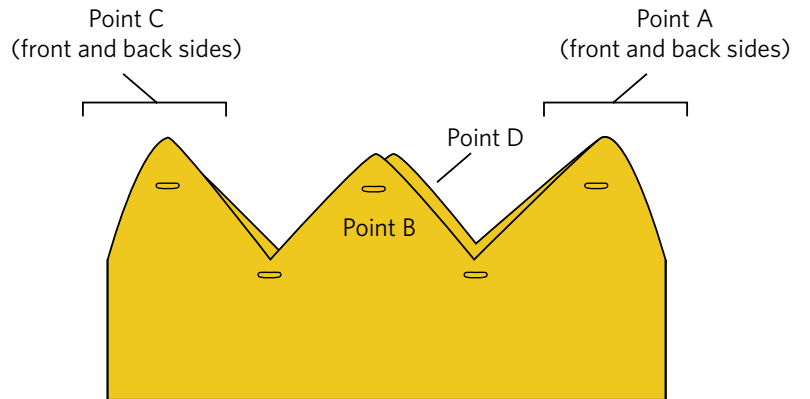
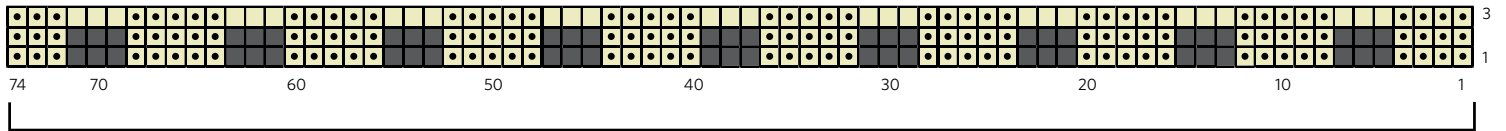


King Shuffle

Crown Configuration



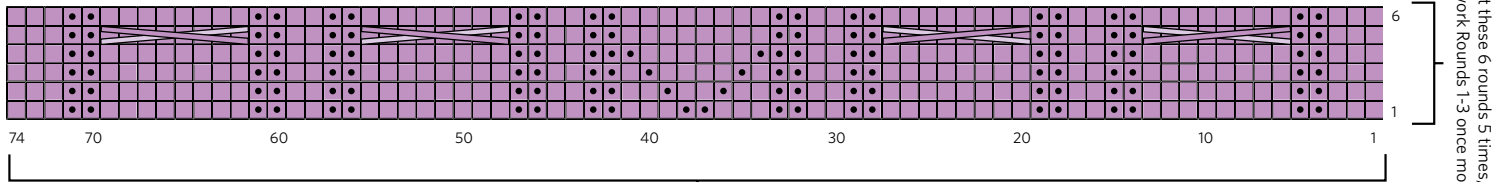
Ermine



Work twice in one round

- Knit with A
- Knit with B
- Purl with A

Sweater

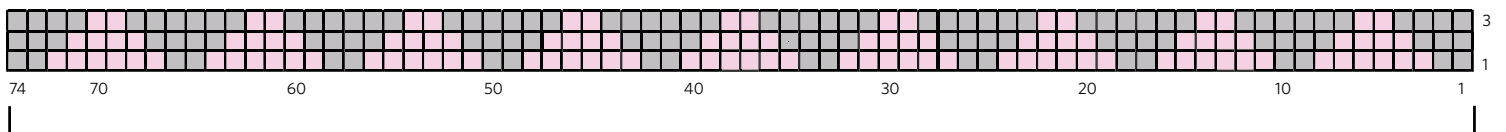


Repeat these 6 rounds 5 times, then work Rounds 1-3 once more

Work twice in one round

- Knit
- Purl
- Cable forward (place first 4 stitches on cable needle and hold in front, knit next 4 stitches, then knit stitches from cable needle)
- Cable backward (place first 4 stitches on cable needle and hold in back, knit next 4 stitches, then knit stitches from cable needle)

Hair



Work twice in one round

- Knit with D
- Knit with E