

1

leather tablemats

WWW.MARTHASTEWART.COM

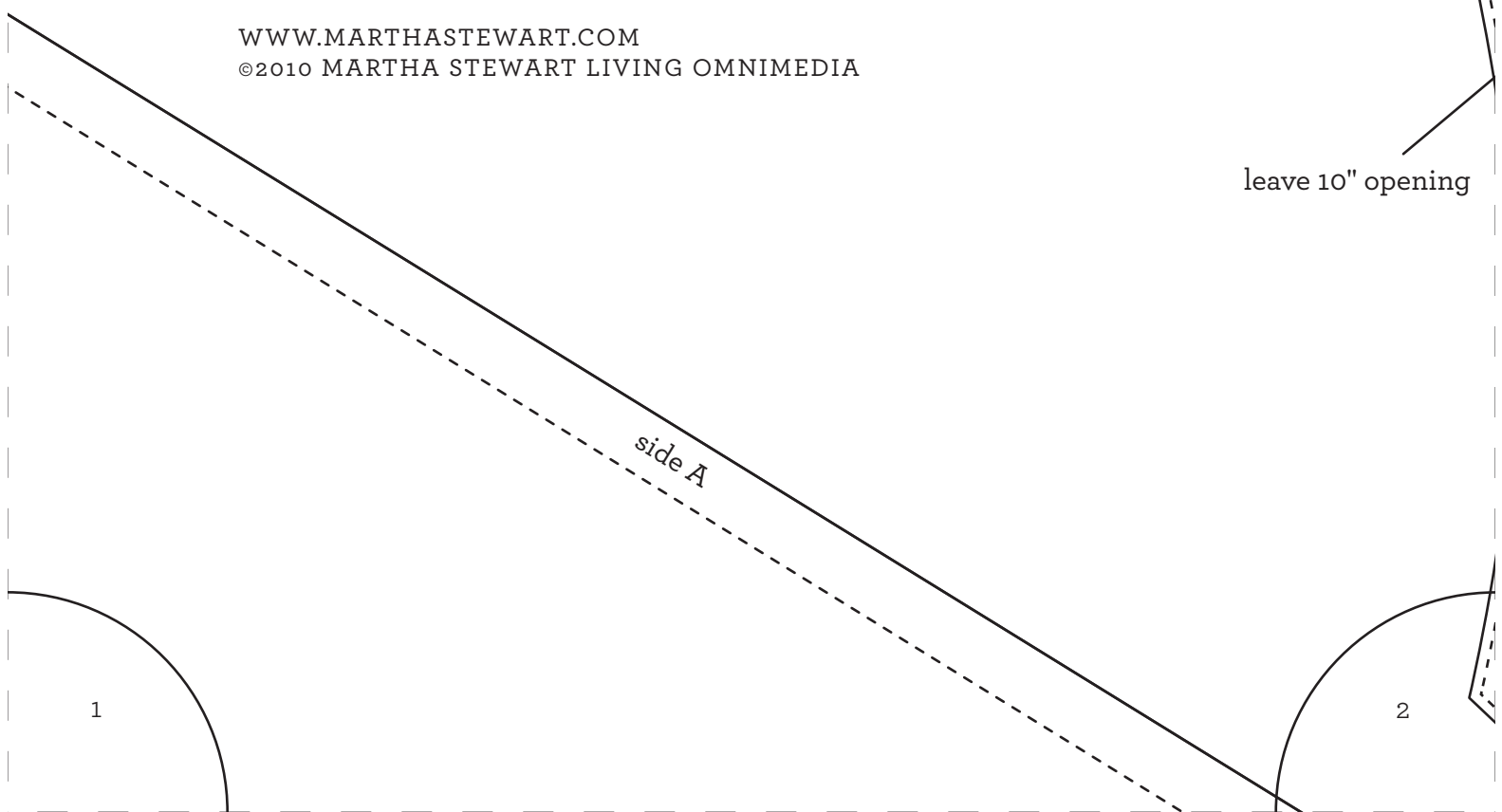
©2010 MARTHA STEWART LIVING OMNIMEDIA

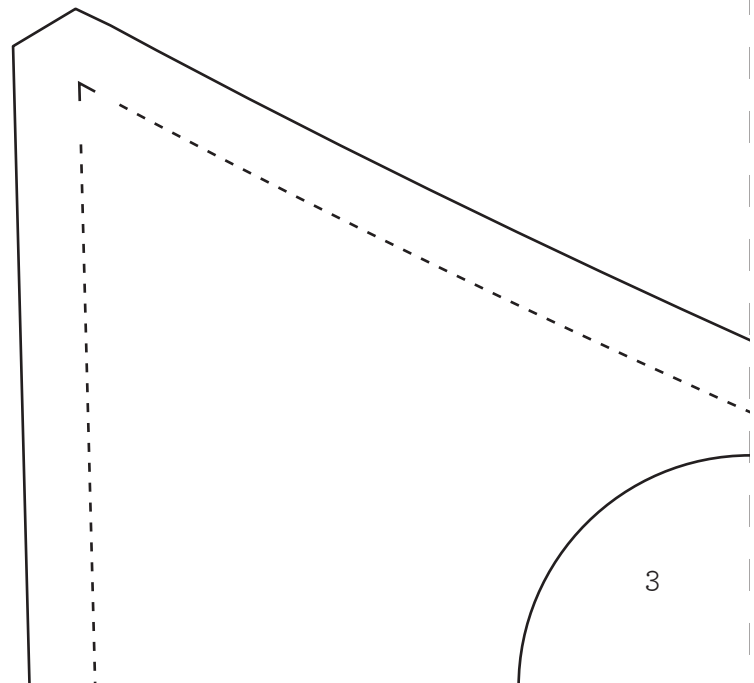
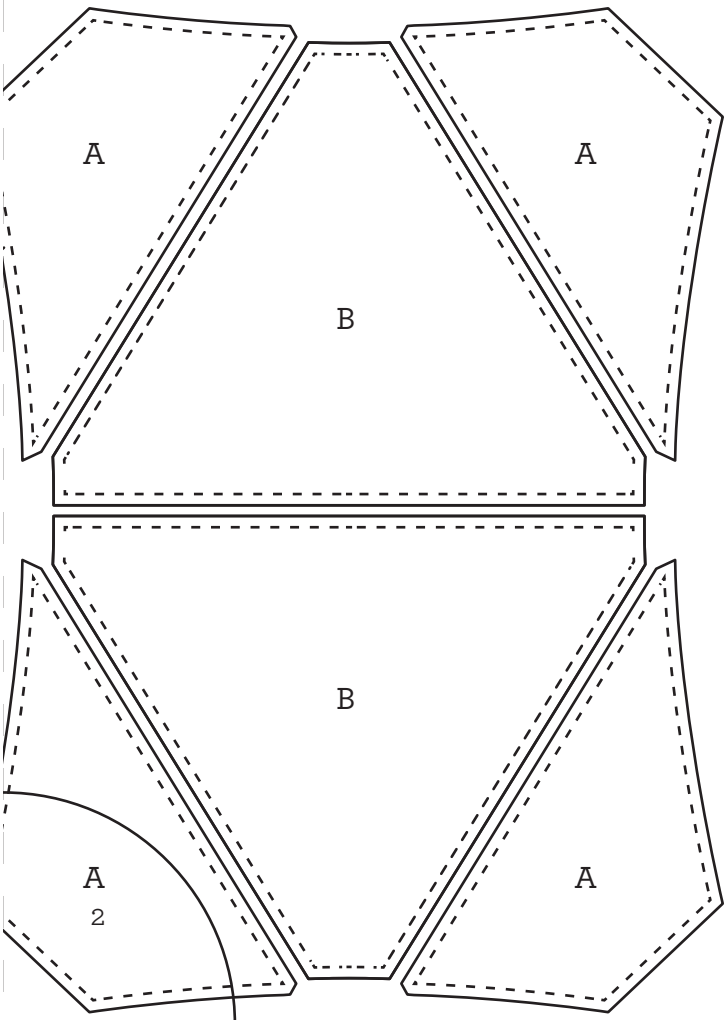
leave 10" opening

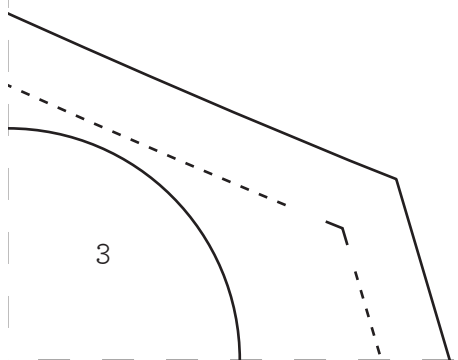
side A

1

2





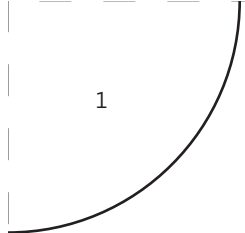


3

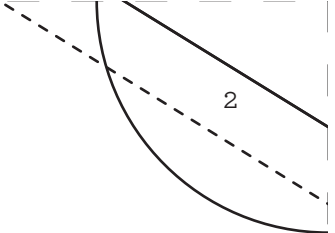
1

1/2" seam

4



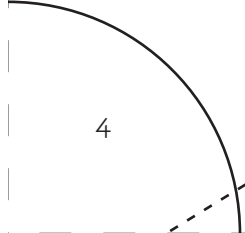
1



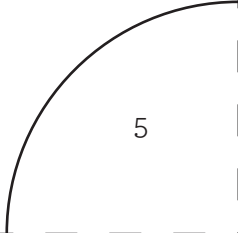
2

B

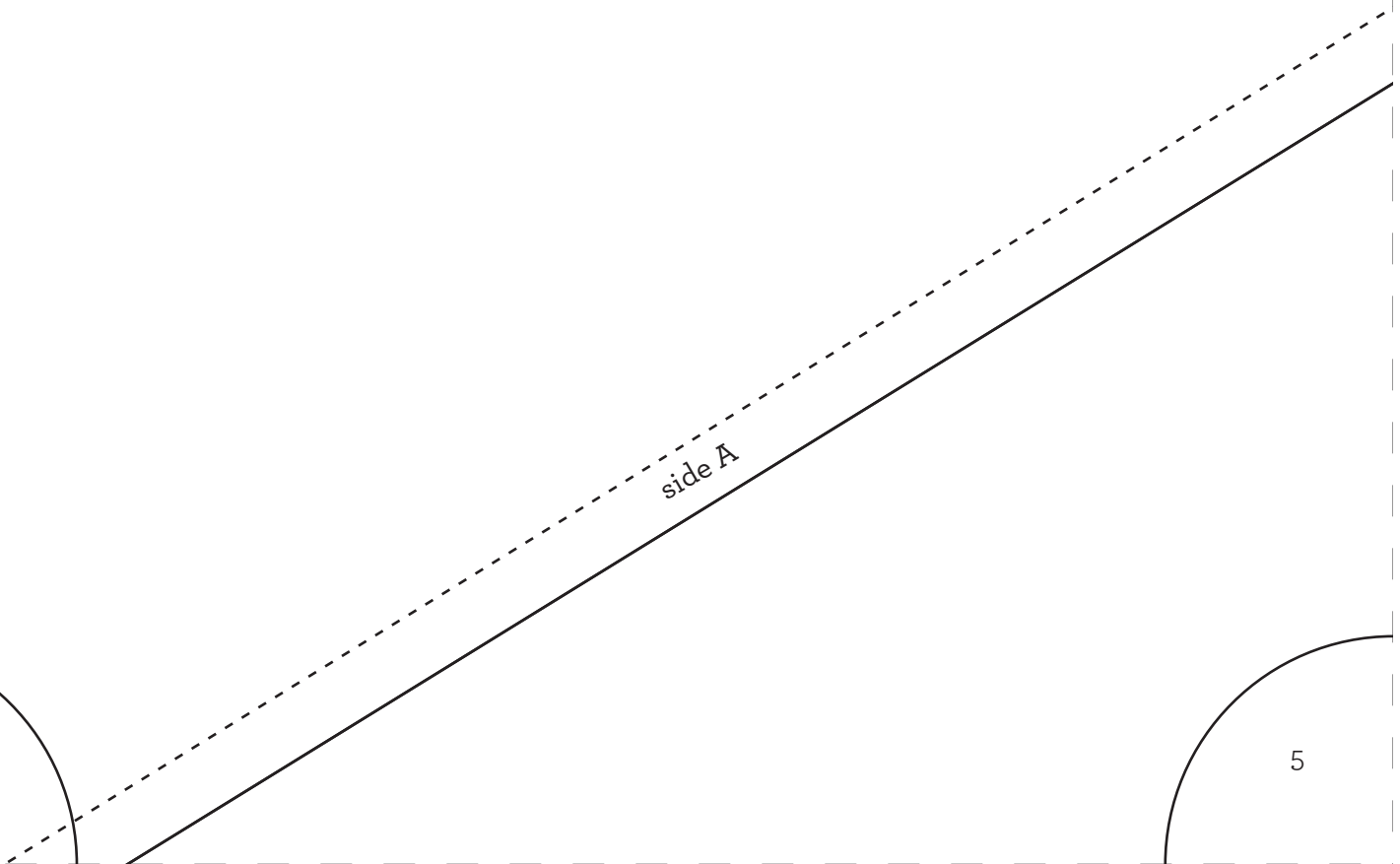
cut 2 leather pieces



4



5



side A

sample layout for reference

2

3

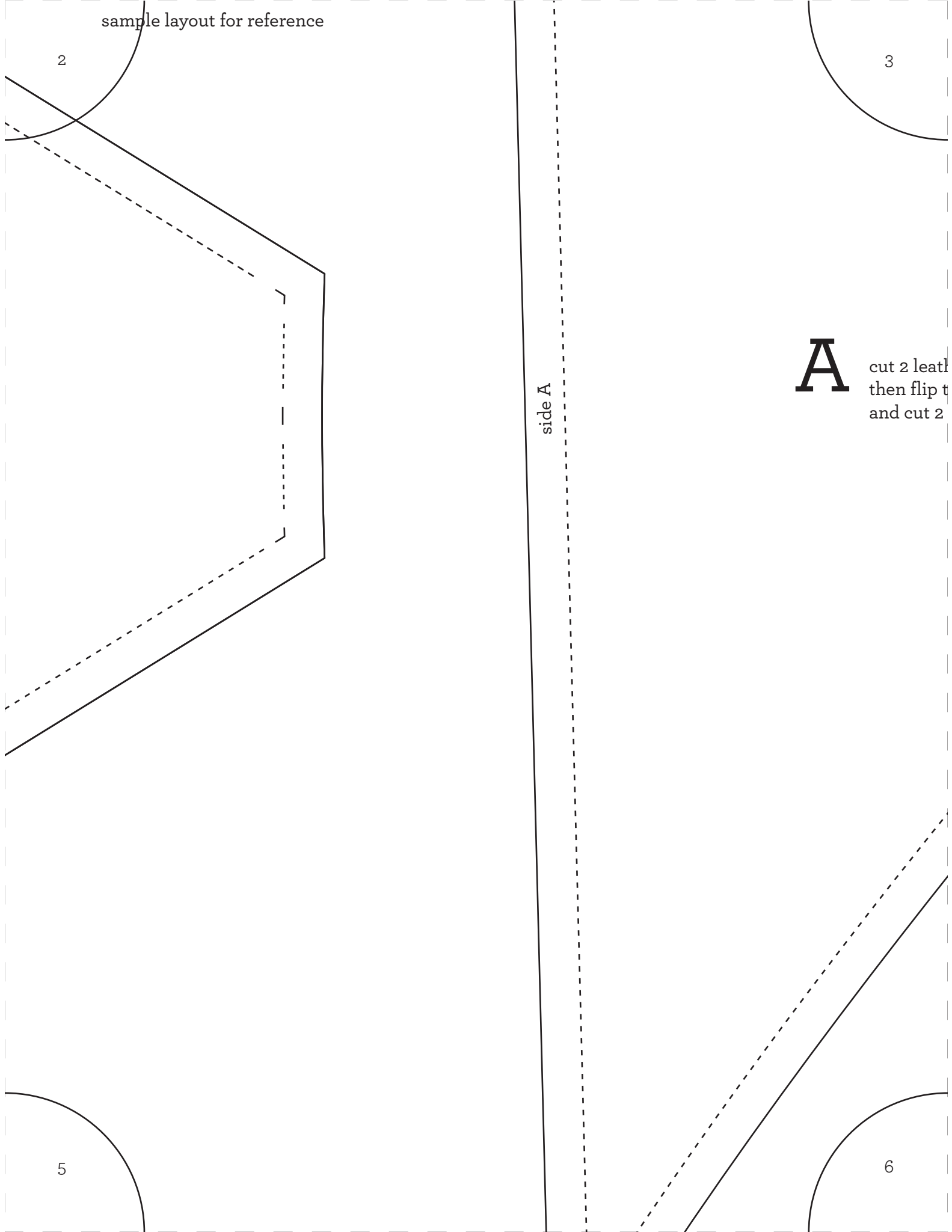
A

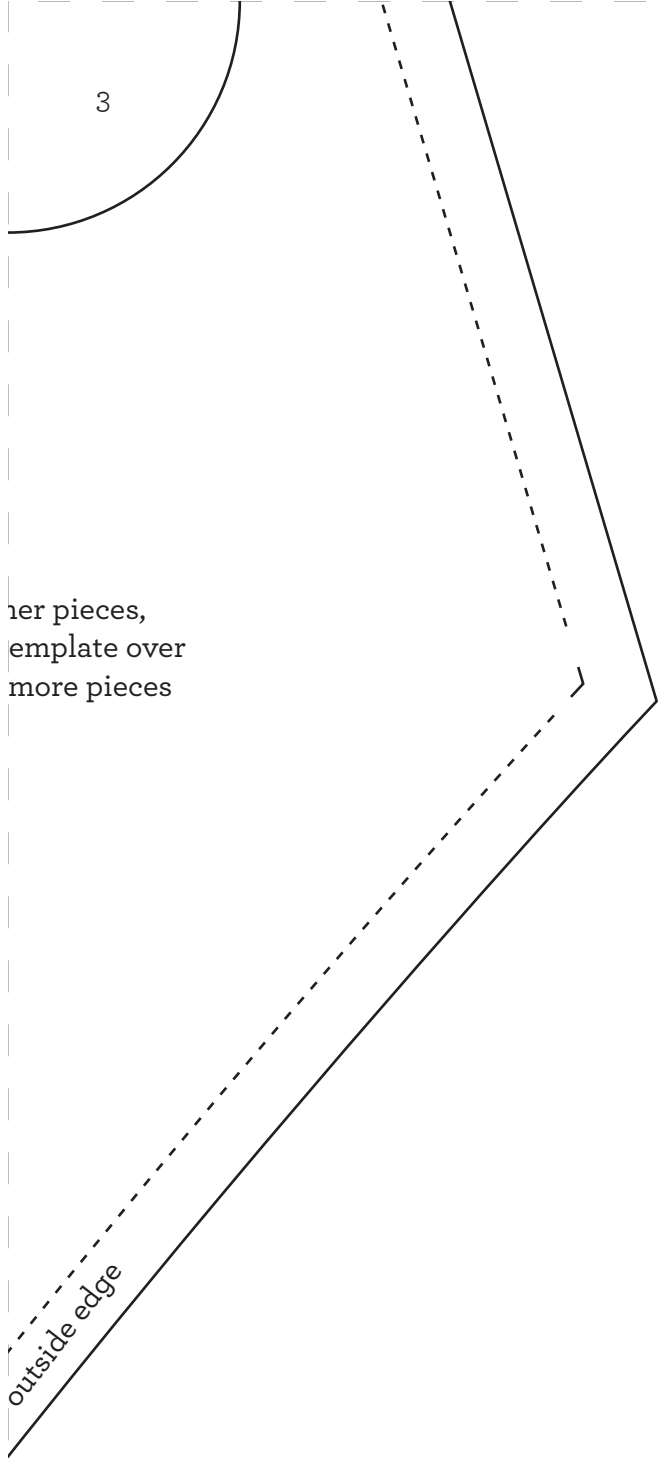
cut 2 leather
then flip them
and cut 2

side A

5

6

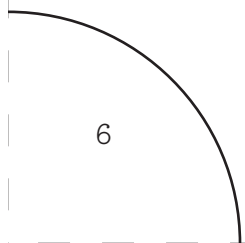




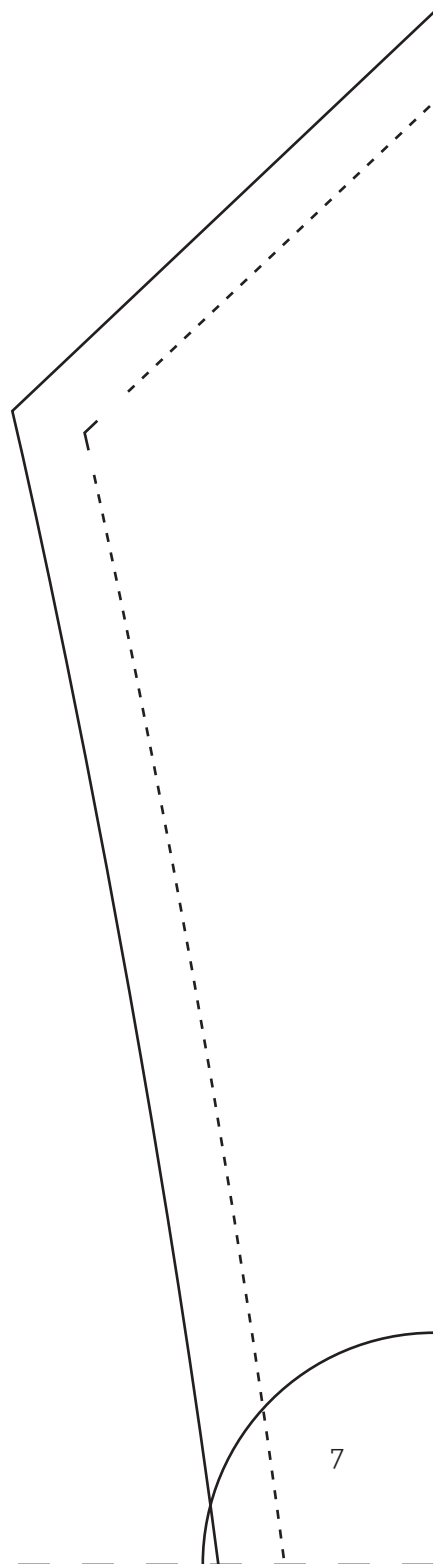
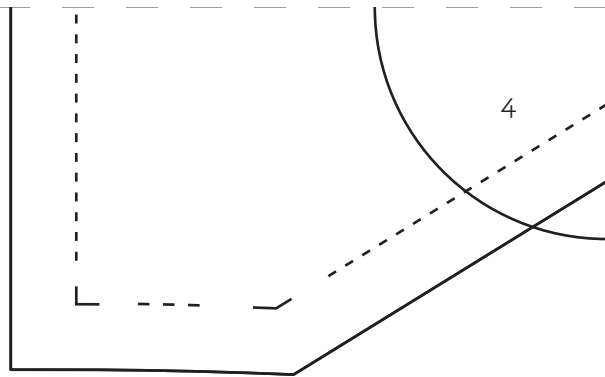
3

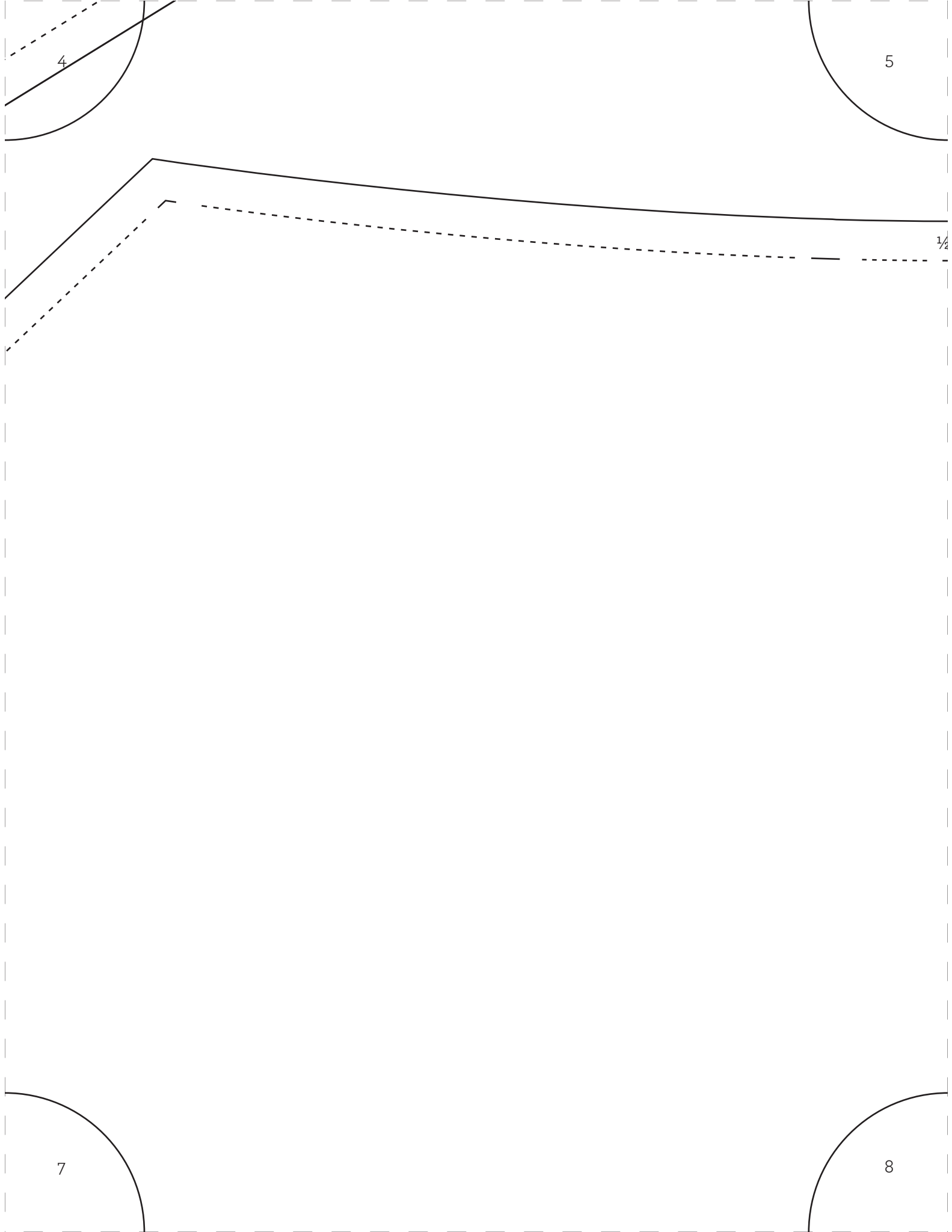
her pieces,
emplate over
more pieces

outside edge



6





4

5

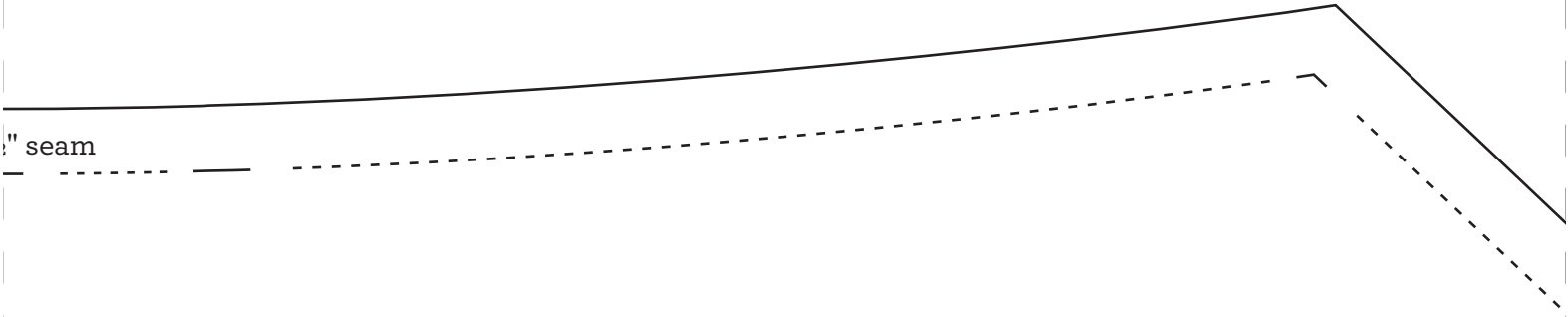
1/2

7

8

5

6



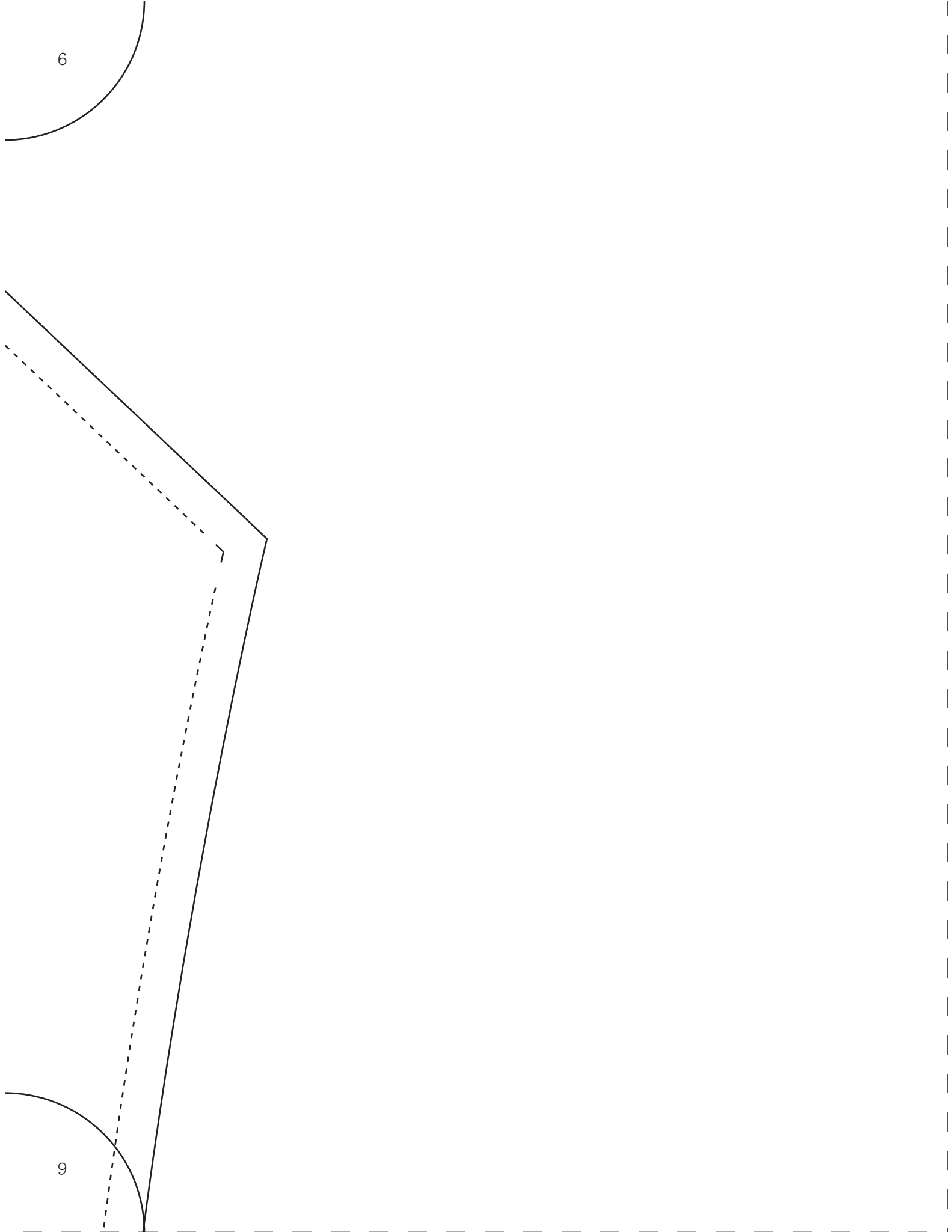
1/2" seam

C

cut 1 canvas pieces

8

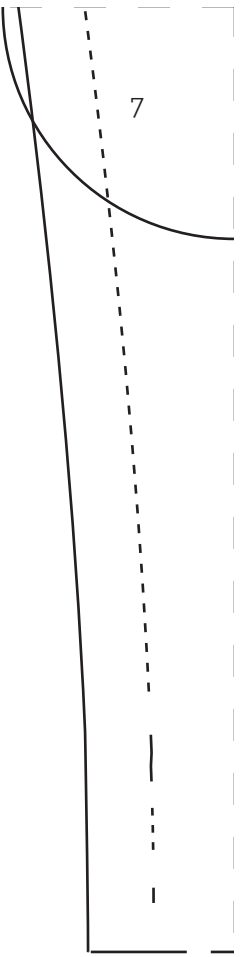
9



6

9

7



7

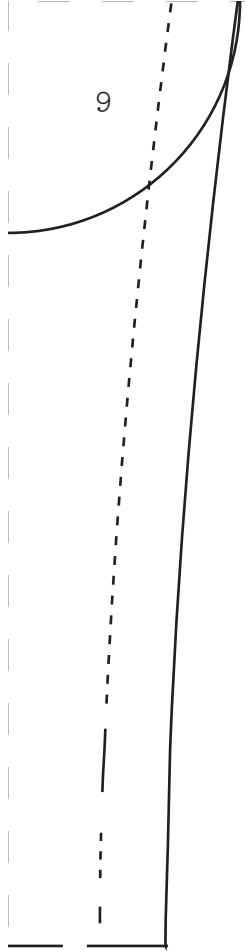
8

○

8

9

N FOLD



9