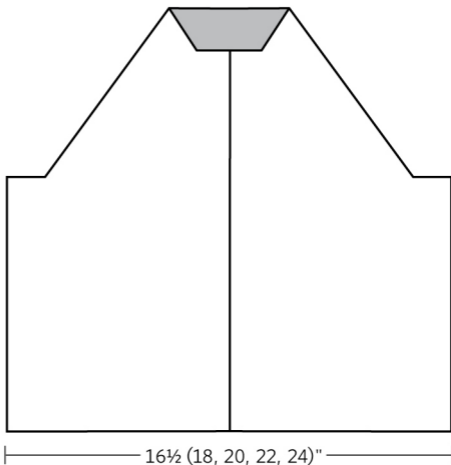


1 (1½, 1¾, 2¼, 2¾)"

4½ (4½, 5¼, 5¼, 5½)"

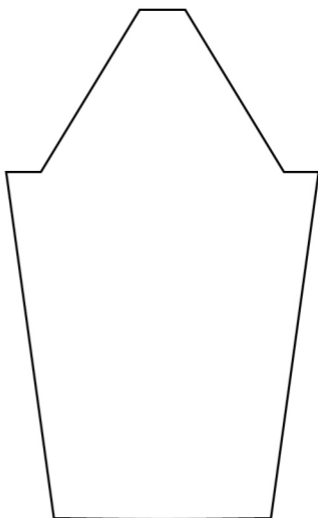
5 (5¾, 6¼, 7, 7¼)"



1 (1½, 1¾, 2¼, 2¾)"

4 (4, 4½, 5, 5½)"

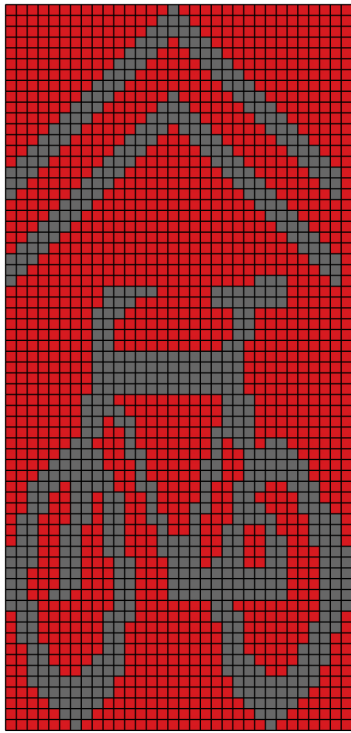
2¼ (3, 3¼, 3¼, 3¼)"



8¾ (9¾, 10, 10¾, 11¼)"

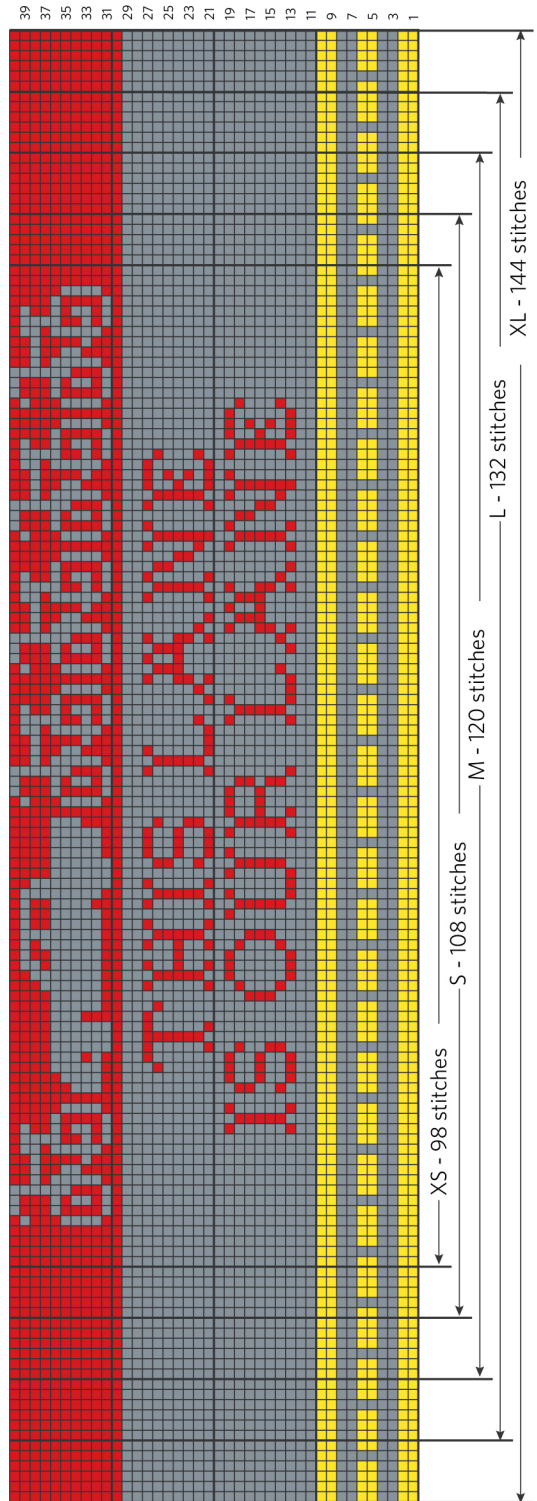
12¾ (14, 15¼, 17¾, 19¾)"

UPPER BACK CHART

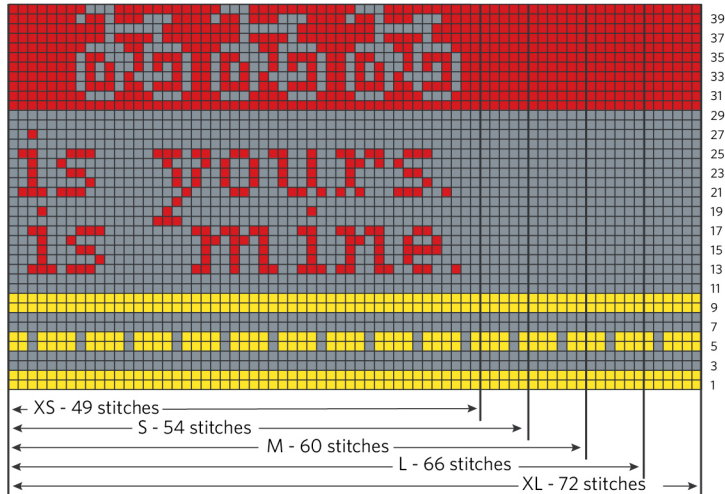


- Color A
- Color B
- Color C

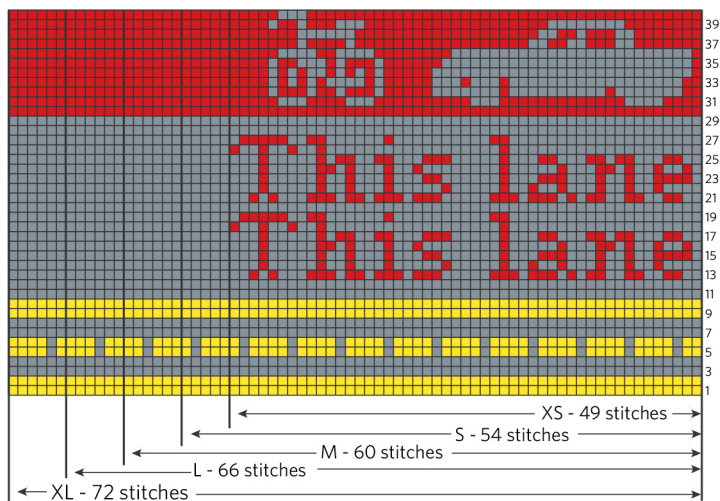
LOWER BACK CHART



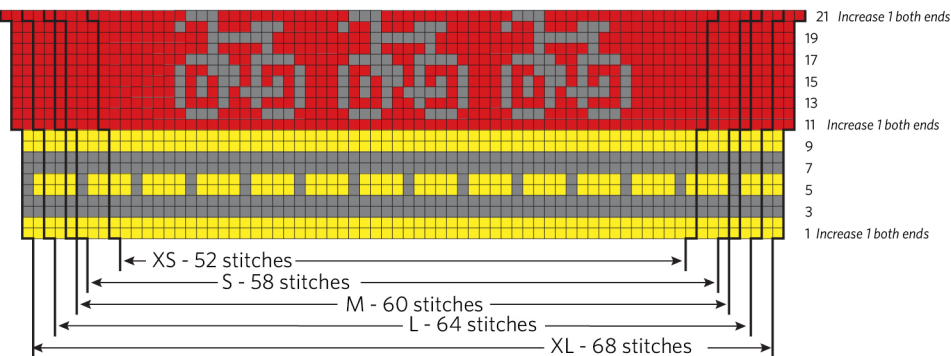
LEFT FRONT CHART



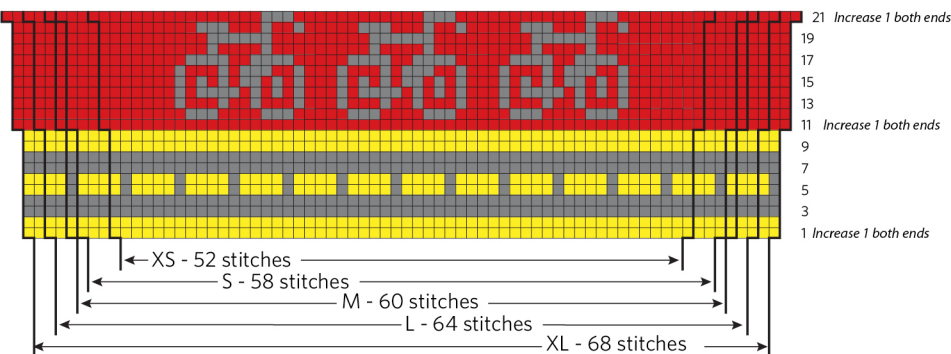
RIGHT FRONT CHART



LEFT SLEEVE CHART



RIGHT SLEEVE CHART



NOTE: This is the number of stitches on the needle as you end the garter stitch border. You will immediately increase 1 stitch on both ends as you begin working chart (as diagrammed).