







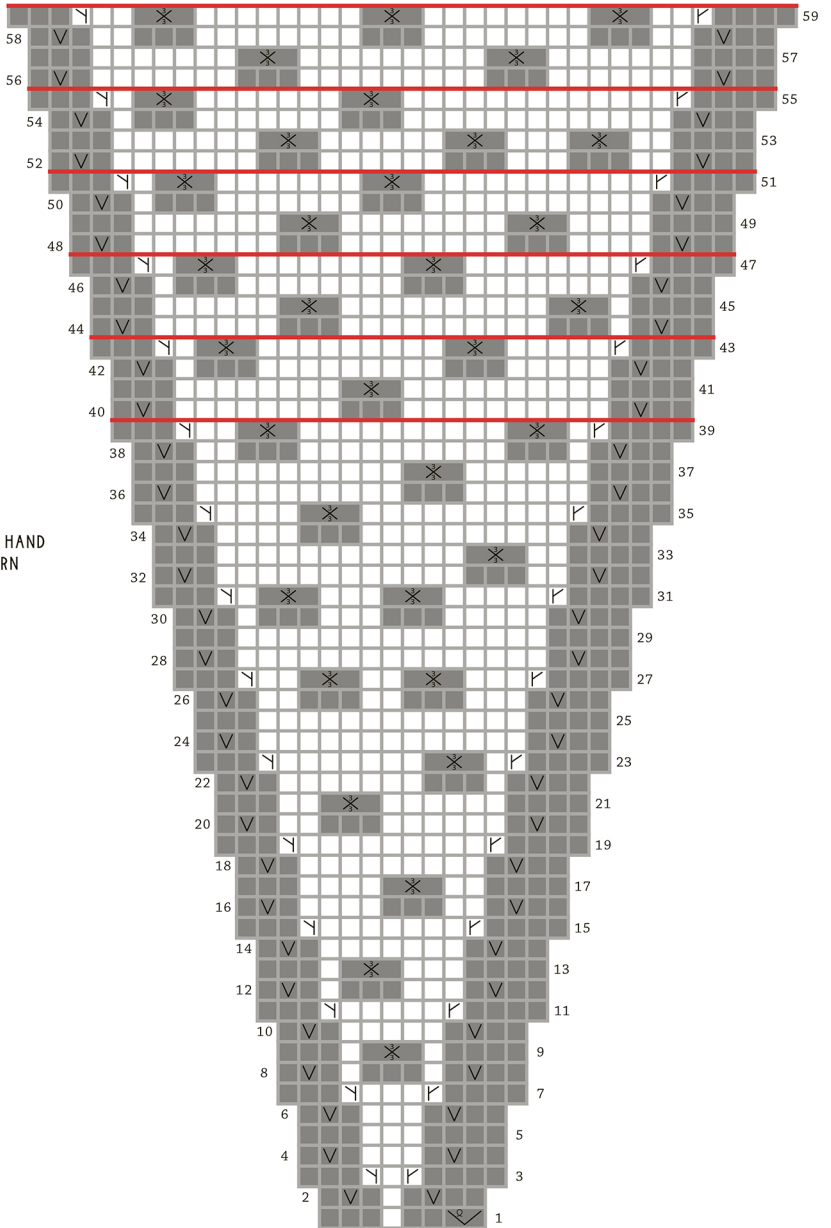


LEFT HAND  
PATTERN

KEY

-  CC1
-  CC2
-  WS: slip purlwise with yarn in front
-  WS: kfb
-  RS: M1R
-  RS: M1L
-  Star
-  End after Row 39 (43, 47, 51, 55, 59), based on your size

38 37 36 35 34 33 32 31 30 29 28 27 26 25 24 23 22 21 20 19 18 17 16 15 14 13 12 11 10 9 8 7 6 5 4 3 2 1



RIGHT HAND  
PATTERN