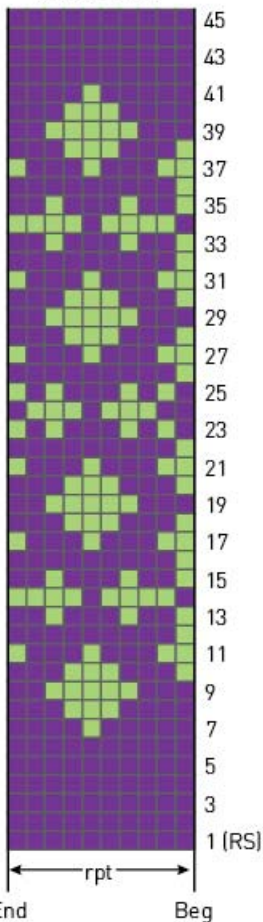


VAIL HAT PATTERN

(mult 20 sts)



Color Key

■ = A

■ = B

NOTE: Each square in the chart represents 2 sts (a knit st on the side of the fabric facing you and a purl st on the side away from you). Bring both yarns to the back or to the front as you knit and purl. Because this hat is made in the round, always knit the 1st st of the pair with the color shown in the chart and purl the 2nd st with the other color.

End

Beg