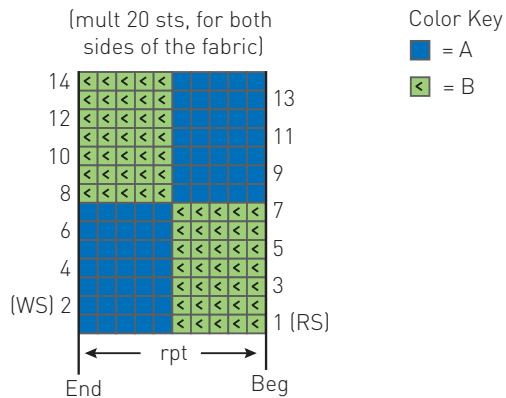
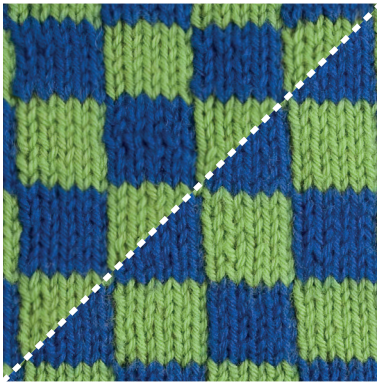


DOUBLE KNIT PATTERN 1



NOTE: Each square in the chart represents 2 sts (a knit stitch on the side of the fabric facing you and a purl st on the side away from you). Bring both yarns to the back or to the front as you knit and purl. On odd-numbered rows, knit the first st of the pair with the color shown in the chart and purl the second st with the other color (not shown); on even-numbered rows, knit the first st with the color not shown in the chart and purl the second st with the color shown in the chart.

 = A
 = B

NOTE: Each square in the chart represents 2 sts (a knit stitch on the side of the fabric facing you and a purl st on the side away from you). Bring both yarns to the back or to the front as you knit and purl. On odd-numbered rows, knit the first st of the pair with the color shown in the chart and purl the second st with the other color (not shown); on even-numbered rows, knit the first st with the color *not* shown in the chart and purl the second st with the color shown in the chart.

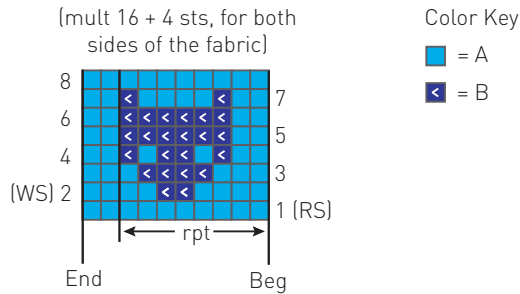
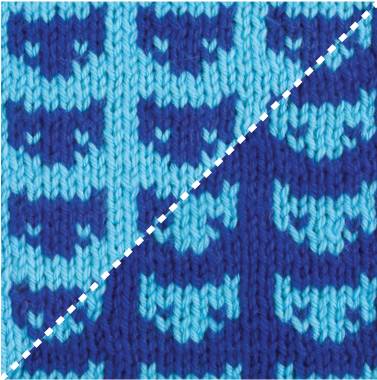
Diagram illustrating a window of size WS=4 and RS=3. The grid shows a sequence of cells, with a double-headed arrow labeled 'rpt' indicating a horizontal shift from 'Beg' to 'End'.

 = A
 = B

NOTE: Each square in the chart represents 2 sts (a knit stitch on the side of the fabric facing you and a purl st on the side away from you). Bring both yarns to the back or to the front as you knit and purl. On odd-numbered rows, knit the first st of the pair with the color shown in the chart and purl the second st with the other color (not shown); on even-numbered rows, knit the first st with the color *not* shown in the chart and purl the second st with the color shown in the chart.

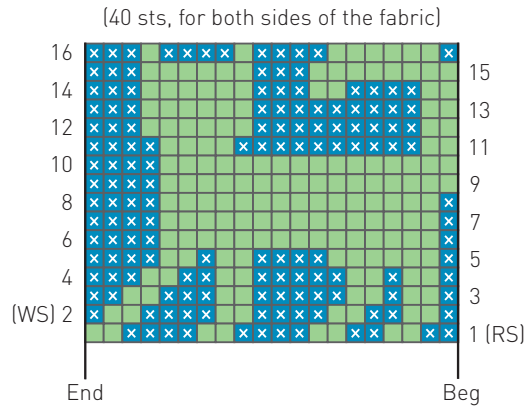
NOTE: Each square in the chart represents 2 sts (a knit stitch on the side of the fabric facing you and a purl st on the side away from you). Bring both yarns to the back or to the front as you knit and purl. On odd-numbered rows, knit the first st of the pair with the color shown in the chart and purl the second st with the other color (not shown); on even-numbered rows, knit the first st with the color *not* shown in the chart and purl the second st with the color shown in the chart.

DOUBLE KNIT PATTERN 6



NOTE: Each square in the chart represents 2 sts (a knit stitch on the side of the fabric facing you and a purl st on the side away from you). Bring both yarns to the back or to the front as you knit and purl. On odd-numbered rows, knit the first st of the pair with the color shown in the chart and purl the second st with the other color (not shown); on even-numbered rows, knit the first st with the color *not* shown in the chart and purl the second st with the color shown in the chart.

DOUBLE KNIT PATTERN 7



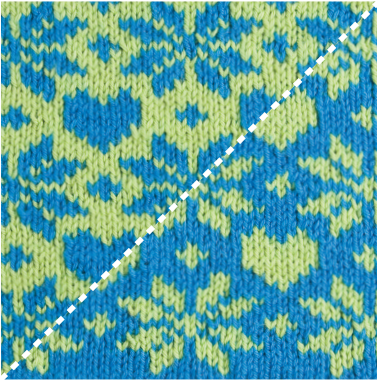
Color Key

- = A
- = B

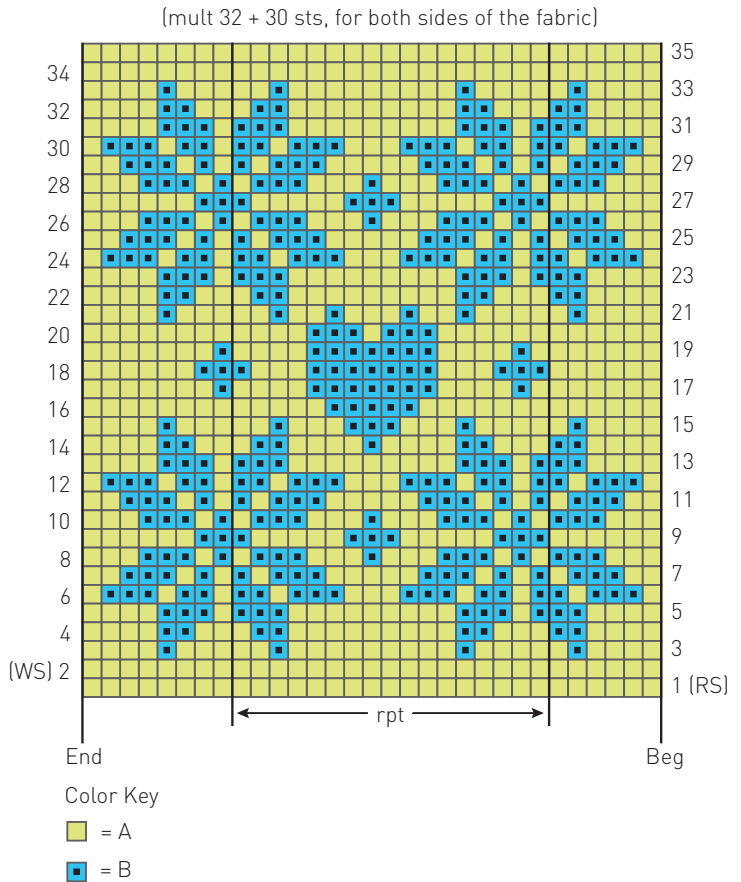


NOTE: Each square in the chart represents 2 sts (a knit stitch on the side of the fabric facing you and a purl st on the side away from you). Bring both yarns to the back or to the front as you knit and purl. On odd-numbered rows, knit the first st of the pair with the color shown in the chart and purl the second st with the other color (not shown); on even-numbered rows, knit the first st with the color *not* shown in the chart and purl the second st with the color shown in the chart.

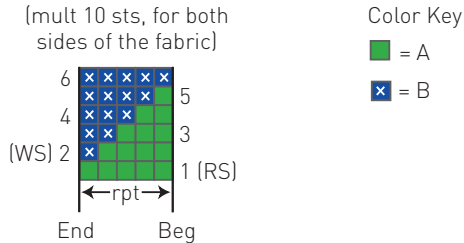
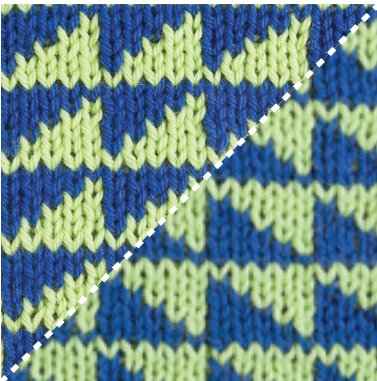
DOUBLE KNIT PATTERN 8



NOTE: Each square in the chart represents 2 sts (a knit stitch on the side of the fabric facing you and a purl st on the side away from you). Bring both yarns to the back or to the front as you knit and purl. On odd-numbered rows, knit the first st of the pair with the color shown in the chart and purl the second st with the other color (not shown); on even-numbered rows, knit the first st with the color *not* shown in the chart and purl the second st with the color shown in the chart.

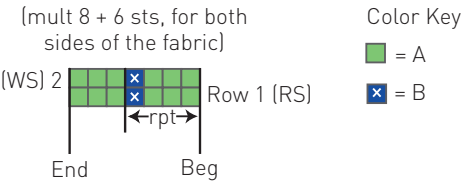


DOUBLE KNIT PATTERN 9



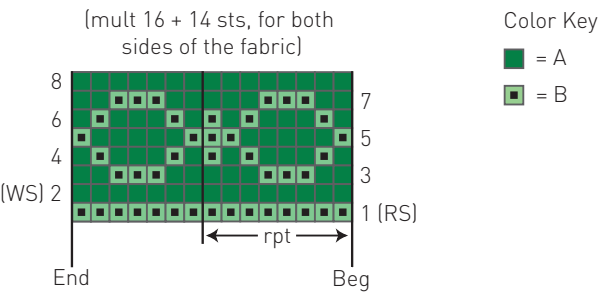
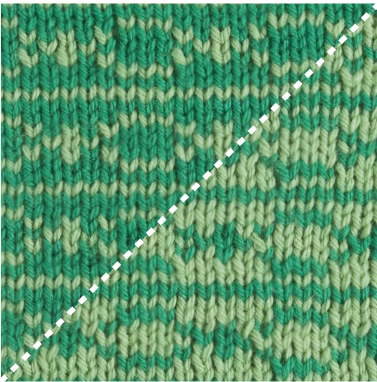
NOTE: Each square in the chart represents 2 sts (a knit stitch on the side of the fabric facing you and a purl st on the side away from you). Bring both yarns to the back or to the front as you knit and purl. On odd-numbered rows, knit the first st of the pair with the color shown in the chart and purl the second st with the other color (not shown); on even-numbered rows, knit the first st with the color *not* shown in the chart and purl the second st with the color shown in the chart.

DOUBLE KNIT PATTERN 10



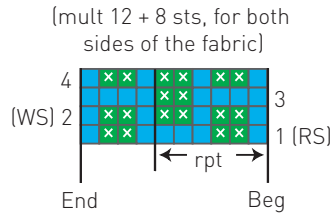
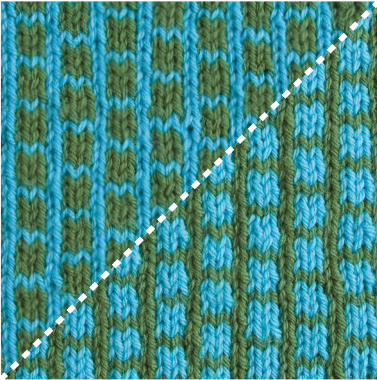
NOTE: Each square in the chart represents 2 sts (a knit stitch on the side of the fabric facing you and a purl st on the side away from you). Bring both yarns to the back or to the front as you knit and purl. On odd-numbered rows, knit the first st of the pair with the color shown in the chart and purl the second st with the other color (not shown); on even-numbered rows, knit the first st with the color *not* shown in the chart and purl the second st with the color shown in the chart.

DOUBLE KNIT PATTERN 11



NOTE: Each square in the chart represents 2 sts (a knit stitch on the side of the fabric facing you and a purl st on the side away from you). Bring both yarns to the back or to the front as you knit and purl. On odd-numbered rows, knit the first st of the pair with the color shown in the chart and purl the second st with the other color (not shown); on even-numbered rows, knit the first st with the color *not* shown in the chart and purl the second st with the color shown in the chart.

DOUBLE KNIT PATTERN 12



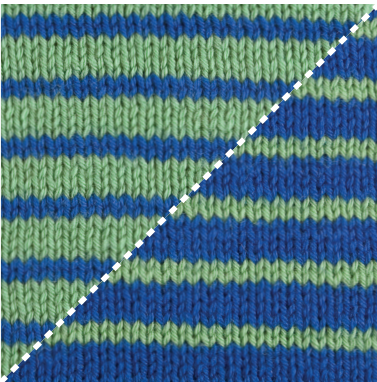
Color Key

x = A

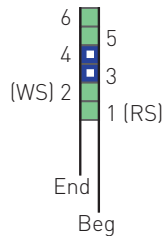
■ = B

NOTE: Each square in the chart represents 2 sts (a knit stitch on the side of the fabric facing you and a purl st on the side away from you). Bring both yarns to the back or to the front as you knit and purl. On odd-numbered rows, knit the first st of the pair with the color shown in the chart and purl the second st with the other color (not shown); on even-numbered rows, knit the first st with the color *not* shown in the chart and purl the second st with the color shown in the chart.

DOUBLE KNIT PATTERN 13



(mult 2 sts, for both sides of the fabric)



Color Key

■ = A

■ = B

NOTE: Each square in the chart represents 2 sts (a knit stitch on the side of the fabric facing you and a purl st on the side away from you). Bring both yarns to the back or to the front as you knit and purl. On odd-numbered rows, knit the first st of the pair with the color shown in the chart and purl the second st with the other color (not shown); on even-numbered rows, knit the first st with the color *not* shown in the chart and purl the second st with the color shown in the chart.