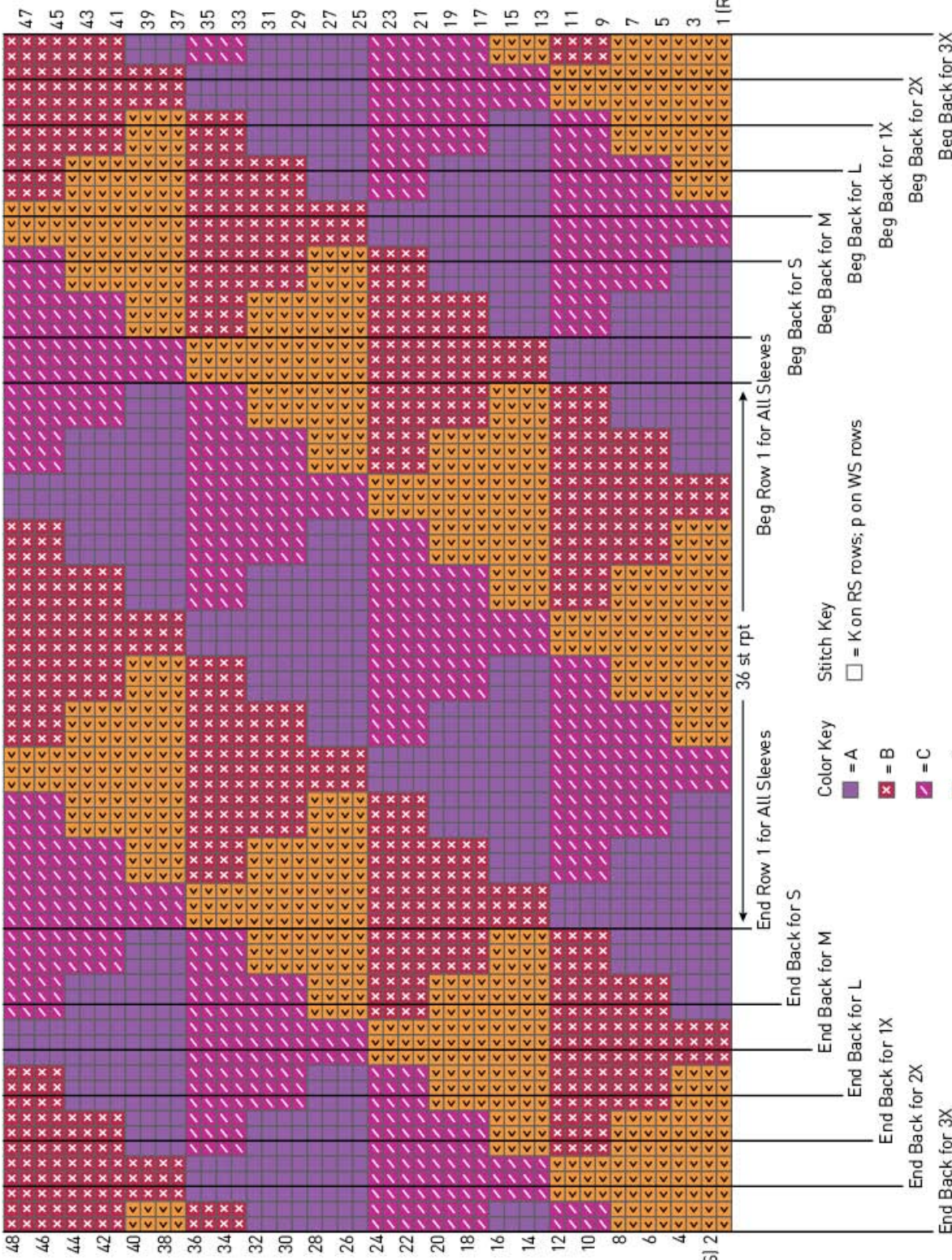
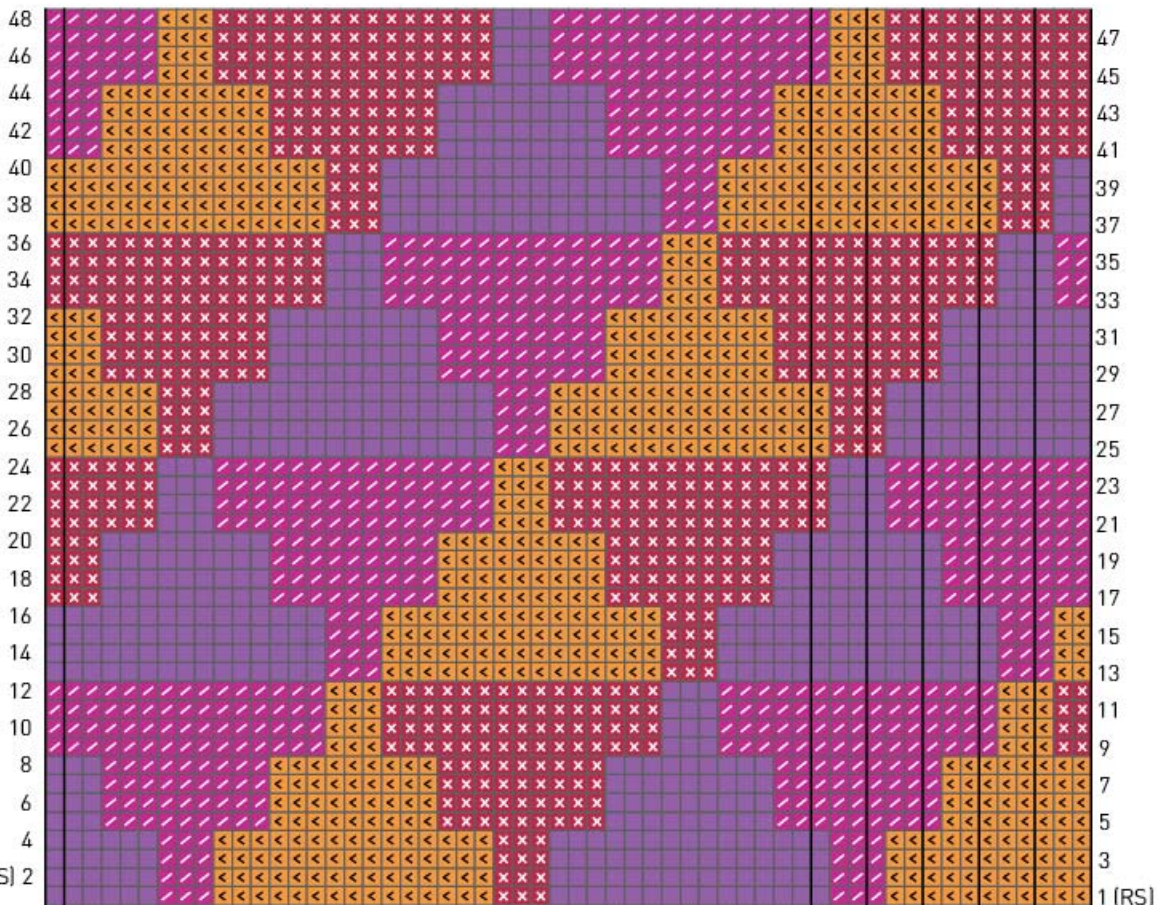


TRIANGLES PATTERN FOR BACK AND SLEEVES



TRIANGLES PATTERN FOR LEFT FRONT



End Left Front for M, 1X, and 3X

End Left Front for
S, L, and 2X

Beg Left Front for S

Beg Left Front for M

Beg Left Front for L

Beg Left Front for 1X

Beg Left Front for 2X

Beg Left Front for 3X

Color Key

- = A
- = B
- = C
- = D

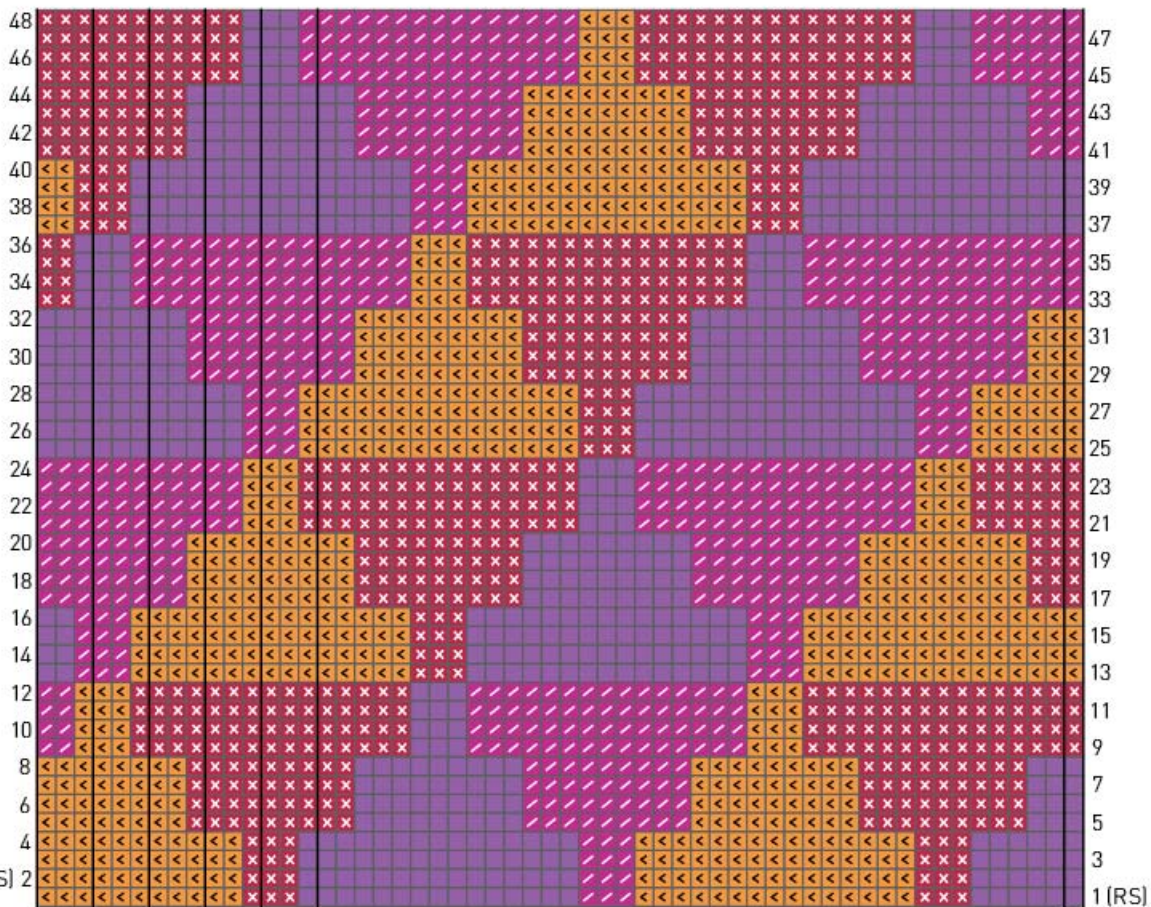
Stitch Key

- = K on RS rows;
p on WS rows

(WS) 2

1 (RS)

TRIANGLES PATTERN FOR RIGHT FRONT



End Right Front for S

Beg Right Front for M, 1X, and 3X

End Right Front for M

Beg Right Front for S, L, and 2X

End Right Front for L

End Right Front for 1X

End Right Front for 2X

End Right Front for 3X

