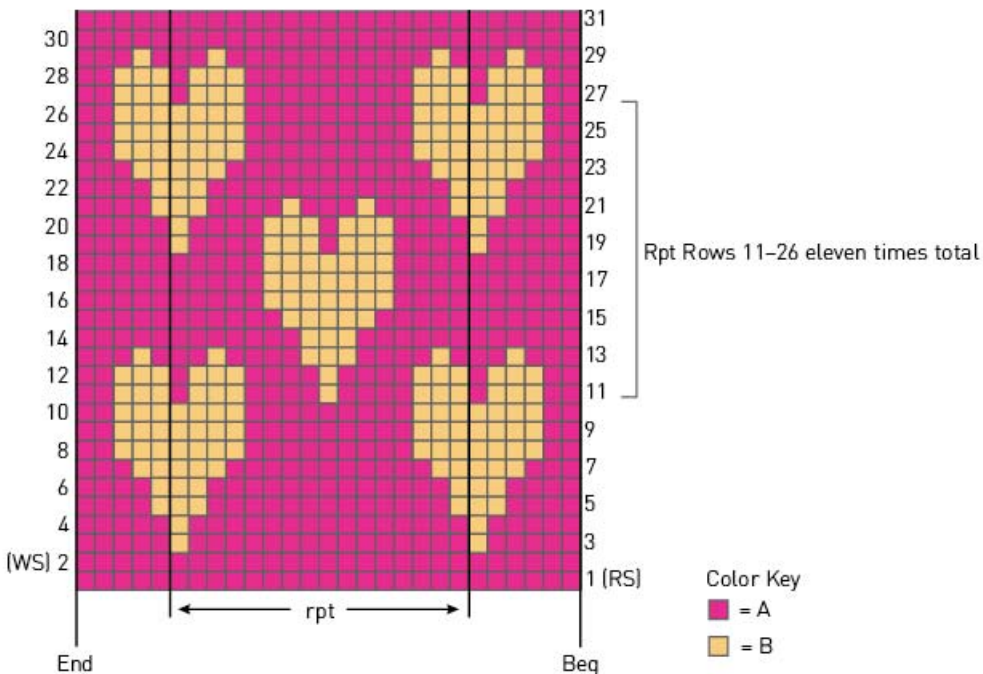


# HEART PATTERN

(mult 32 + 22 sts)



**NOTE:** Each square in the chart represents 2 sts (a knit st on the side of the fabric facing you and a purl st on the side away from you). Bring both yarns to the back or to the front as you knit and purl. On odd-numbered rows, knit the 1st st of the pair with the

color shown in the chart and purl the 2nd st with the other color (not shown); on even-numbered rows, knit the 1st st with the color *not* shown in the chart and purl the 2nd st with the color shown in the chart.