

Geometric Motifs

INTARSIA PATTERN 1



Color Key

■ = A

■ = B

◁ = C

↗ = D

✕ = E

◻ = F

▷ = G

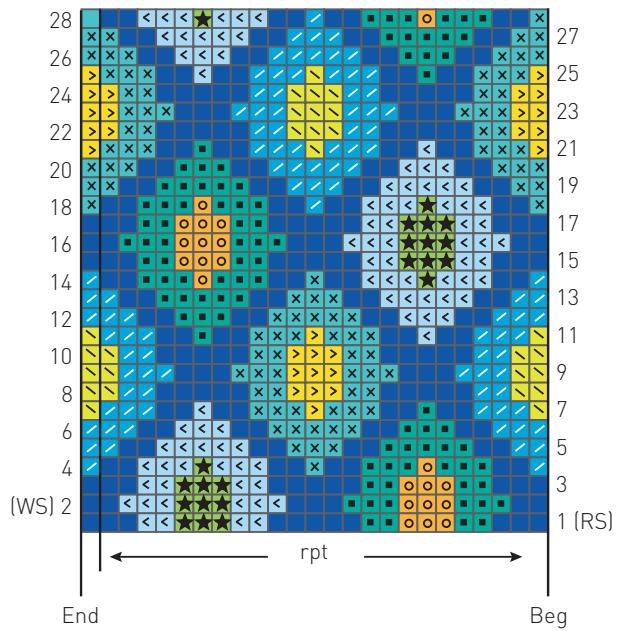
★ = H

○ = I

Stitch Key

□ = K on RS; p on WS

(mult 24 + 1 sts)

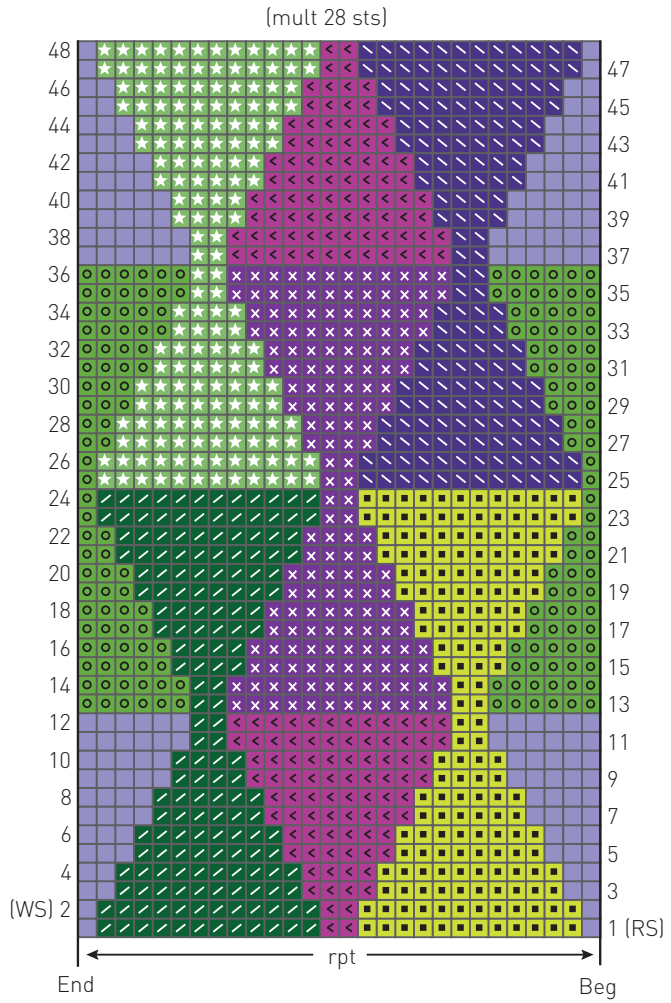


INTARSIA PATTERN 2

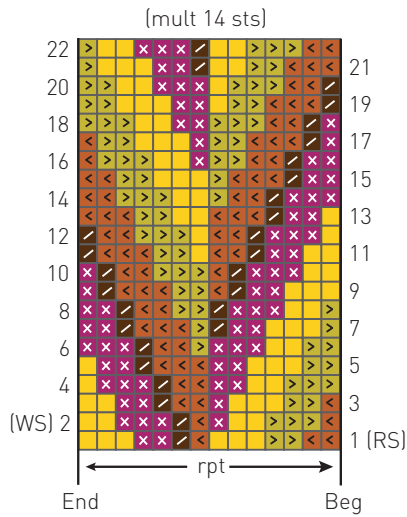


- Color Key
- = A
 - = B
 - = C
 - = D
 - = E
 - = F
 - = G
 - = H

Stitch Key = K on RS; p on WS



INTARSIA PATTERN 3



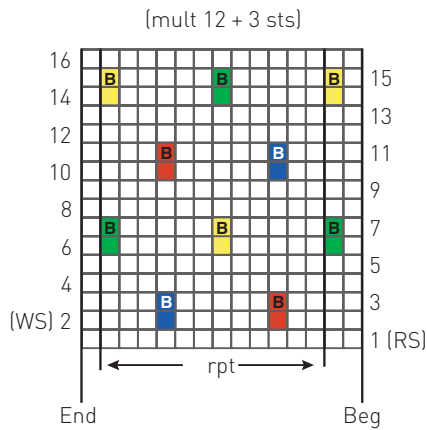
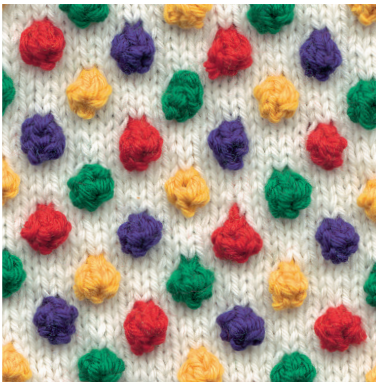
Color Key

- = A
- = B
- = C
- = D
- = E

Stitch Key

- = K on RS; p on WS

INTARSIA PATTERN 4



Color Key

- = A
- = B
- = C
- = D
- = E

Stitch Key

- = K on RS; p on WS
- B** = Bobble = K into (front, back, front) of next st, turn; p1, (p1, yo, p1) all into next st, p1, turn; k5, turn; p2tog, p1, p2tog, turn; slip 2 sts at once knitwise, k1, p2sso

INTARSIA PATTERN 5



Color Key

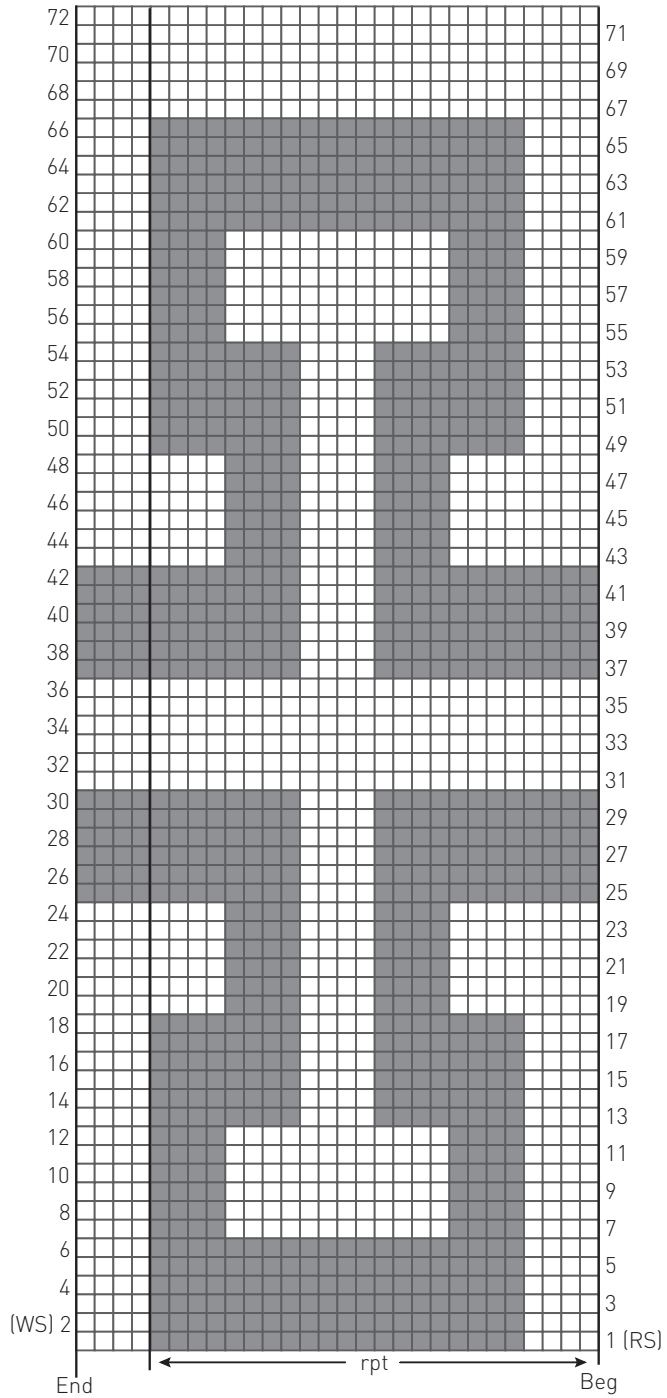
□ = A

■ = B

Stitch Key

□ = K on RS; p on WS

(mult 24 + 4 sts)

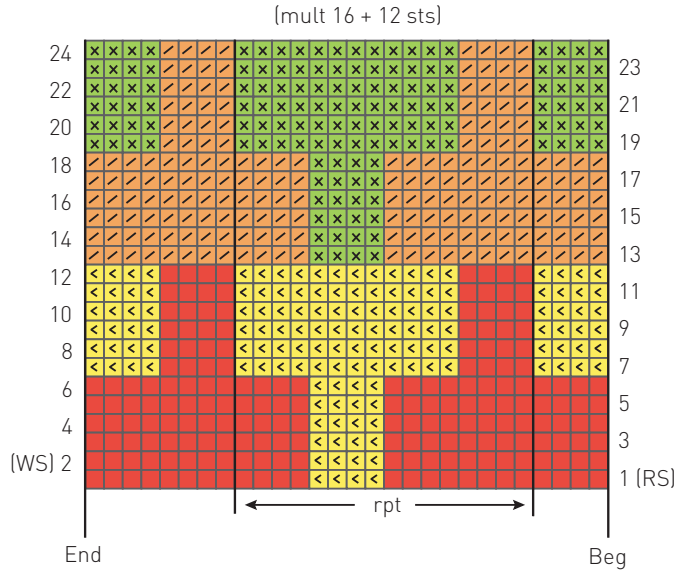


INTARSIA PATTERN 6



Color Key Stitch Key

= A = K on RS; p on WS
 = B
 = C
 = D

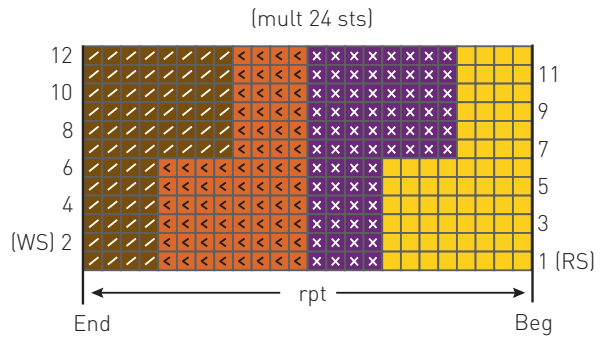


INTARSIA PATTERN 7



Color Key Stitch Key

= A = K on RS; p on WS
 = B
 = C
 = D



INTARSIA PATTERN 8

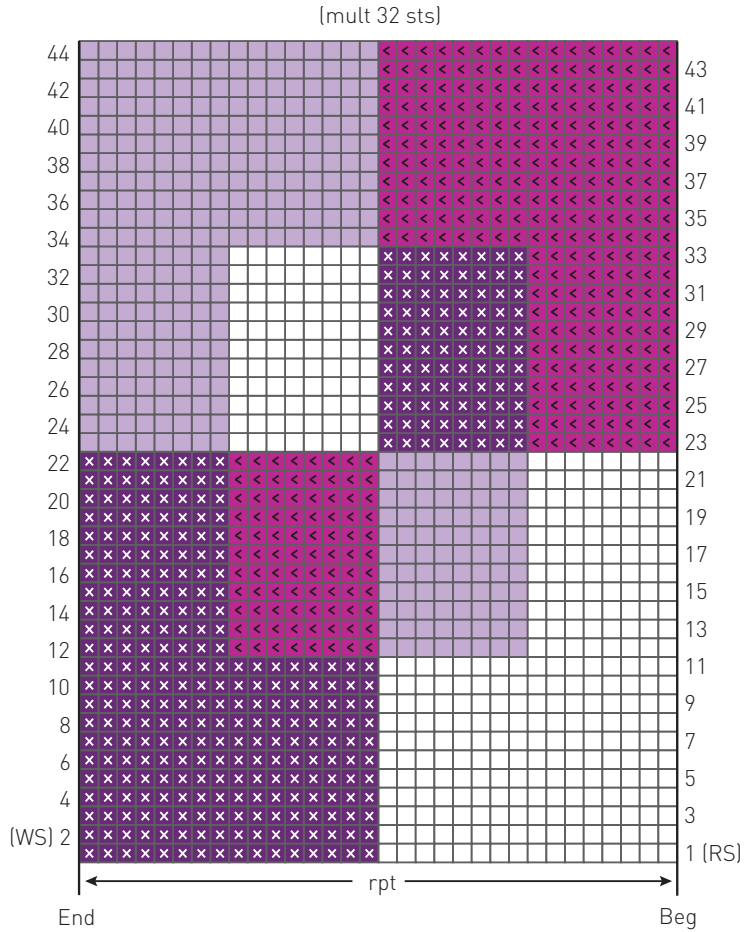


Color Key

- = A
- x = B
- < = C
- = D

Stitch Key

- = K on RS; p on WS



INTARSIA PATTERN 9

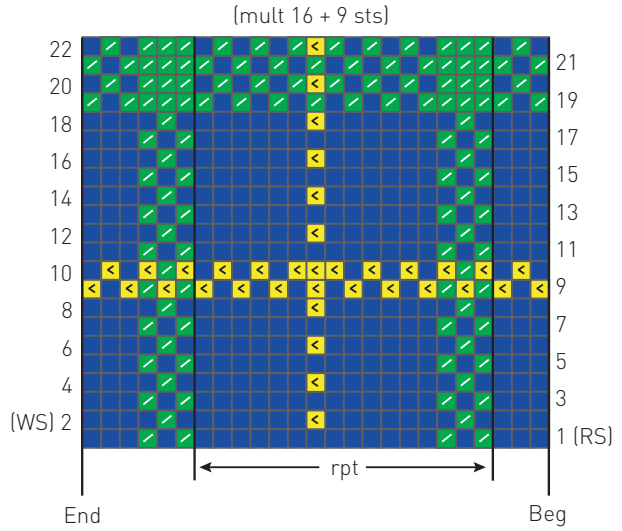


Color Key Stitch Key

- = A
- = B
- = C

Stitch Key

- = K on RS; p on WS



INTARSIA PATTERN 10

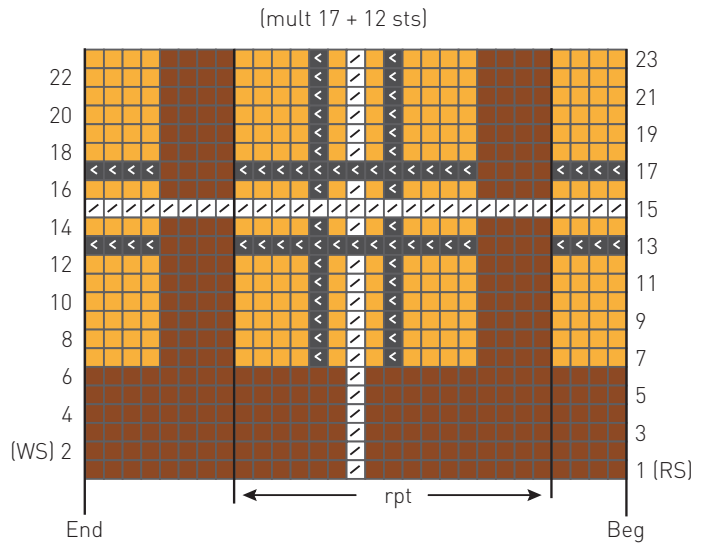


Color Key Stitch Key

- = A
- = B
- = C
- = D

Stitch Key

- = K on RS; p on WS

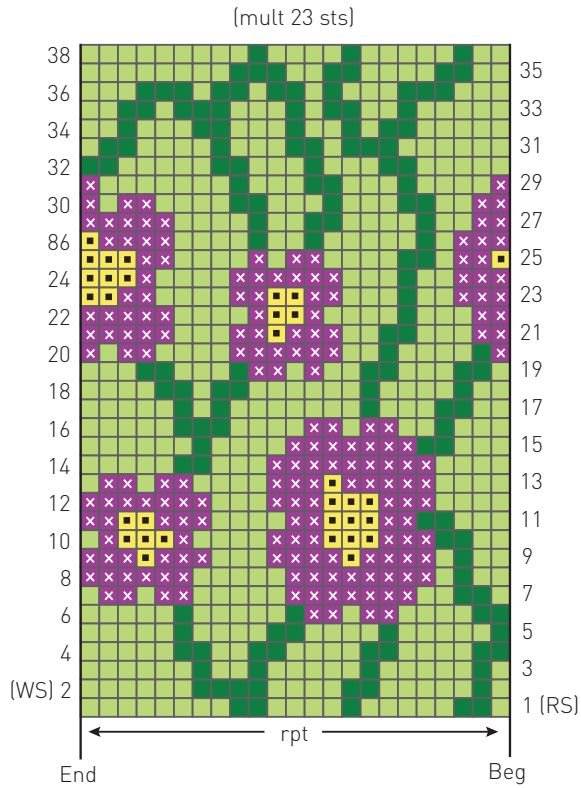


Pictorial Motifs

INTARSIA PATTERN 11



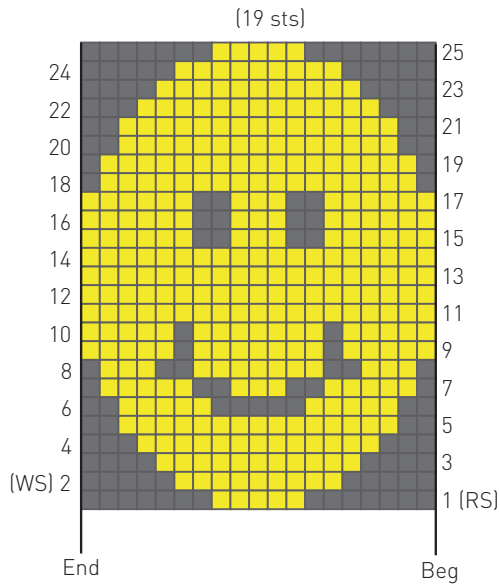
- | | |
|---|---|
| Color Key | Stitch Key |
| = A | = K on RS; p on WS |
| = B | |
| x = C | |
| = D | |



INTARSIA PATTERN 12



- | | |
|---|---|
| Color Key | Stitch Key |
| = A | = K on RS; p on WS |
| = B | |



INTARSIA PATTERN 13

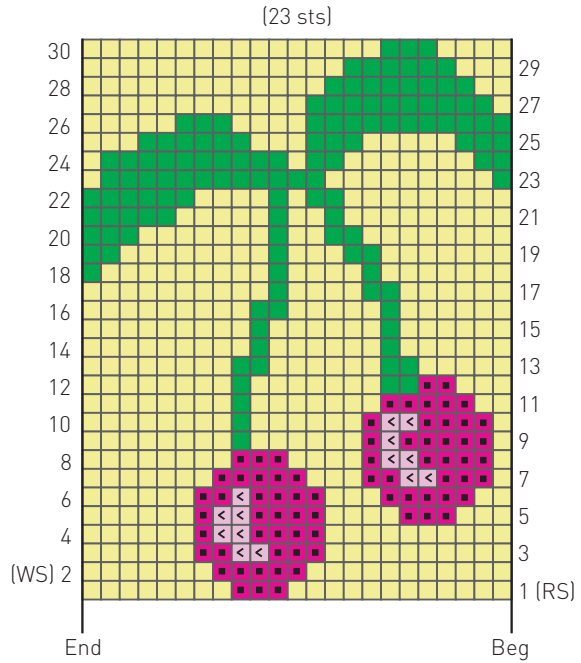


Color Key Stitch Key

■ = A □ = K on RS; p on WS

■ = B ◁ = C

◁ = C ■ = D



INTARSIA PATTERN 14

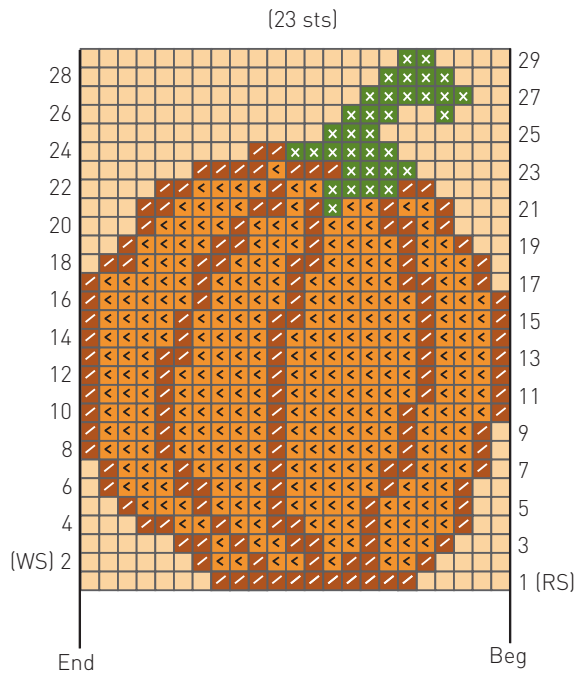


Color Key Stitch Key

■ = A □ = K on RS; p on WS

■ = B ◁ = C

■ = C ■ = D



INTARSIA PATTERN 15

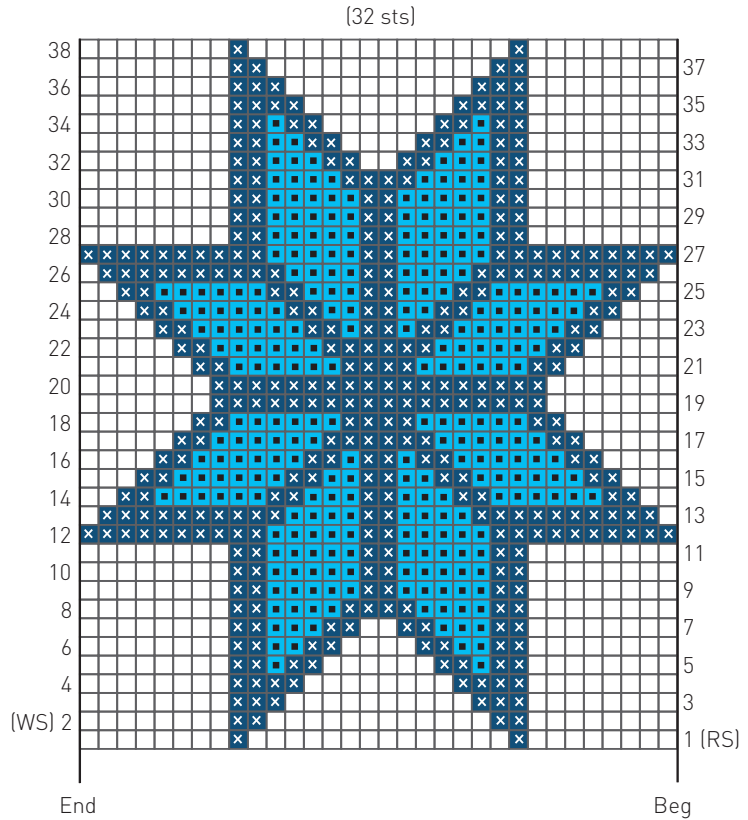


Color Key

- = A
- ⊗ = B
- = C

Stitch Key

- = K on RS; p on WS



INTARSIA PATTERN 16

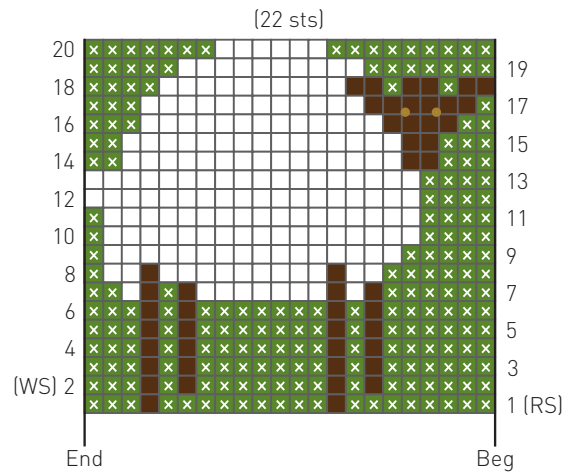


Color Key

- ⊗ = A
- = B
- = C

Stitch Key

- = K on RS; p on WS
- = French Knot (page 168)



INTARSIA PATTERN 17



Color Key

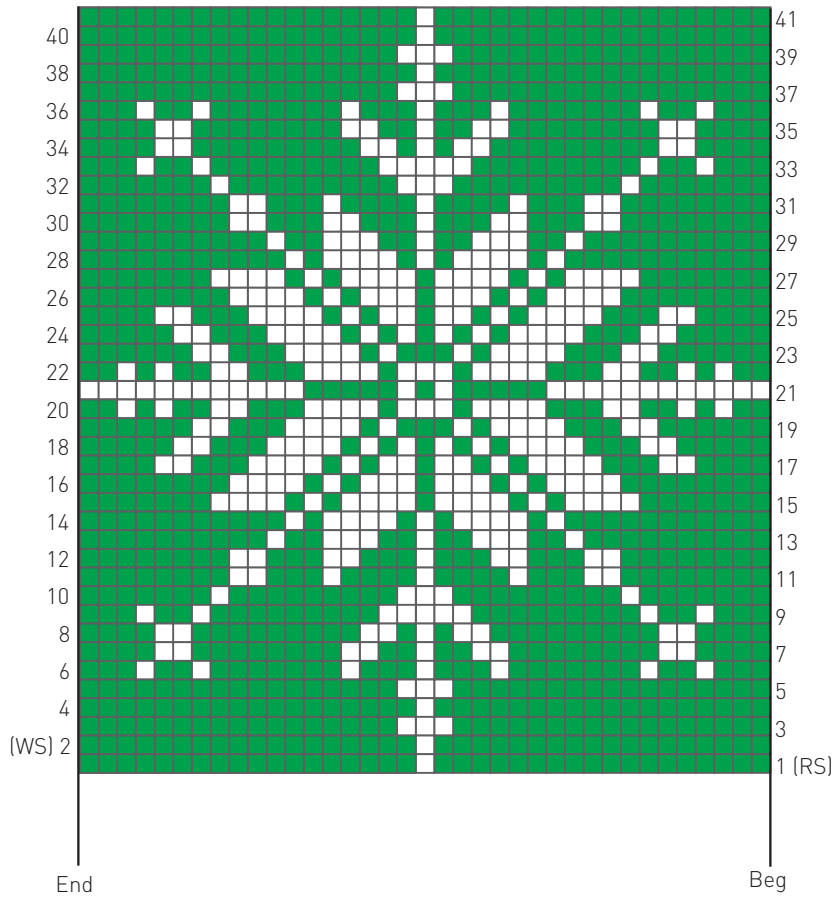
■ = A

□ = B

Stitch Key

□ = K on RS; p on WS

(37 sts)



INTARSIA PATTERN 18



Color Key

- = A
- = B
- ⊗ = C
- = D

Stitch Key

- = K on RS; p on WS

NOTE: Embroider mouth and tie ribbon bow at neck. Use two 5/8" [16mm] buttons for eyes.

