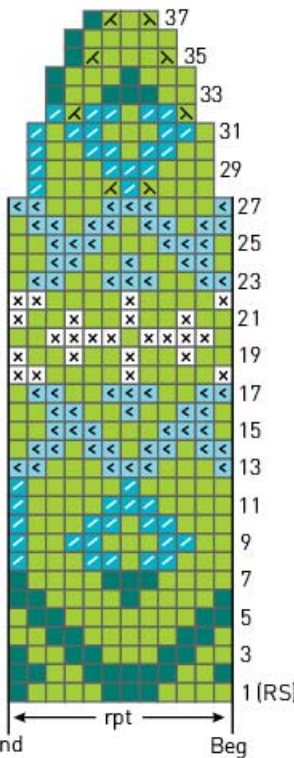


### WOMAN'S STRANDED HAT PATTERN

(mult 12 sts, dec to mult of 4 sts)



#### Color Key

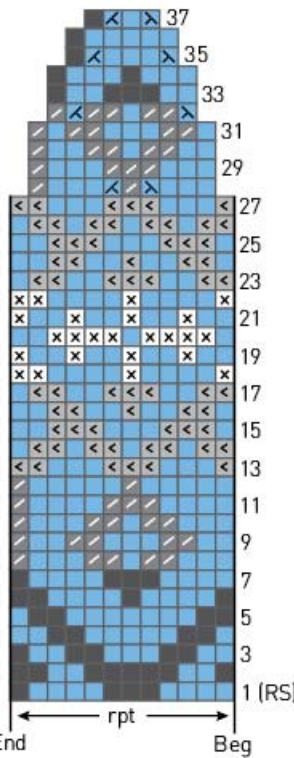
- = A
- = B
- = C
- = D
- = E

#### Stitch Key

- = K
- = K2tog
- = SSK

### MAN'S STRANDED HAT PATTERN

(mult 12 sts, dec to mult of 4 sts)



#### Color Key

- = A
- = B
- = C
- = D
- = E

#### Stitch Key

- = K
- = K2tog
- = SSK