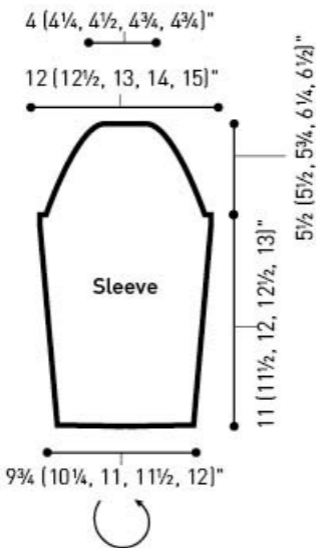


Hip: 33 (35 1/2, 37, 40 1/2, 43 1/2)"

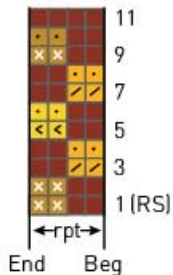
Bust: 31 (34, 37 1/2, 40, 42 3/4)"



**NOTE:** Measurements in schematic illustrations are finished measurements and do not include steak stitches or front borders.

## BORDER PATTERN

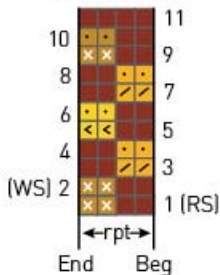
Knitted in the Round  
(mult 4 sts)



**NOTE:** On Rnds 2, 4, 6, 8, and 10 only: Purl sts worked in colors B, C, and D; knit sts worked in color A.

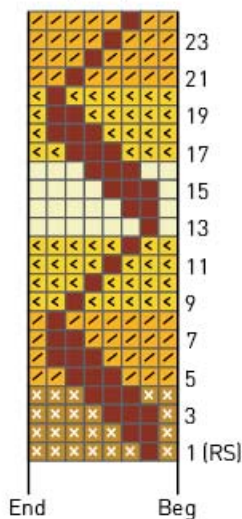
## SIDE PANEL PATTERN

Knitted Flat  
(mult 4 sts)

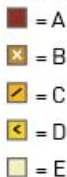


**NOTE:** On Rows 2, 4, 6, 8, and 10 only: Knit sts worked in colors B, C, and D; purl sts worked in color A.

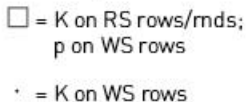
(8 sts)



Color Key



Stitch Key



# FLEUR DE LIS PATTERN

